



# AGNICO EAGLE

## UPPER BEAVER PROJECT

### UPPER BEAVER GOLD PROJECT DETAILED PROJECT DESCRIPTION PLAIN LANGUAGE SUMMARY



December 2021

wood.

## TABLE OF CONTENTS

	<b>PAGE</b>
<b>A. INTRODUCTION AND GENERAL INFORMATION.....</b>	<b>1</b>
A.1 Project Name, Sector and Location .....	3
A.2 Proponent .....	3
<b>B. PLANNING PHASE RESULTS.....</b>	<b>4</b>
B.1 Summary of Engagement with Stakeholders.....	4
B.2 Summary of Engagement with Indigenous Nations.....	6
B.3 Summary of Issues.....	7
B.4 Regional Studies / Assessments and Strategic Assessments .....	9
<b>C. PROJECT INFORMATION .....</b>	<b>10</b>
C.1 Purpose and Need for the Project, and Potential Benefits.....	10
C.2 Applicable Physical Activities Regulation Provisions .....	10
C.3 Activities, Infrastructure, Structures and Physical Works.....	11
C.3.1 Proposed Mine Facilities and Infrastructure .....	14
C.3.2 Preliminary List of Activities .....	19
C.4 Capacity Estimate.....	21
C.5 Preliminary Schedule .....	21
C.6 Potential Alternatives.....	22
<b>D. LOCATION INFORMATION AND CONTEXT.....</b>	<b>24</b>
D.1 Geographic Coordinates .....	24
D.2 Description of Lands and Surrounding Area.....	24
D.3 Physical and Biological Environmental Setting .....	27
D.3.1 Climate, Air Quality, Noise and Light.....	27
D.3.2 Physiography and Geology .....	27
D.3.3 Surface Water and Groundwater.....	28
D.3.4 Terrestrial Environment.....	28
D.3.5 Aquatic Environment.....	30
D.3.6 Species at Risk .....	30
D.4 Social, Economic and Health Context .....	30
D.4.1 Site History.....	30
D.4.2 Social Context.....	31
D.4.3 Economic Context .....	31
D.4.4 Health Context.....	32



<b>E.</b>	<b>FEDERAL, PROVINCIAL, INDIGENOUS AND MUNICIPAL INVOLVEMENT AND EFFECTS .....</b>	<b>33</b>
E.1	Federal Funding or Federal Lands Needed.....	33
E.2	Federal, Provincial and Municipal Environmental Approvals.....	33
E.2.1	Federal .....	33
E.2.2	Provincial.....	33
E.2.3	Municipal .....	33
<b>F.</b>	<b>POTENTIAL EFFECTS OF THE PROJECT .....</b>	<b>36</b>
F.1	Changes to Fish and Fish Habitat, Aquatic Species and Migratory Birds .....	36
F.2	Potential Changes to the Environment on Federal Lands or Lands outside Ontario.....	36
F.3	Potential Effects to Indigenous Peoples .....	36
F.4	Estimate of Greenhouse Gas Emissions .....	39
F.5	Wastes and Emissions .....	39
F.6	Overview of Potential Environmental Effects.....	39

#### LIST OF TABLES

Table S.1:	Summary of Representative Comments in Summary of Issues and Responses .....	7
Table S.2:	Preliminary List of Mine Facilities and Comparison to Advanced Exploration Facilities.....	14
Table S.3:	Preliminary List of Activities of the Upper Beaver Gold Project .....	19
Table S.4:	Land Claims and Assertions of Indigenous Nations.....	26
Table S.5:	Preliminary List of Potential Federal and Provincial Approvals .....	34
Table S.6:	Preliminary List of Changes to the Environment under Federal Authority .....	37
Table S.7:	Preliminary Listing of Types of Wastes or Emissions .....	40
Table S.8:	Preliminary Summary of Potential Environmental Effects.....	42
Table S.9:	Preliminary Comments and Preliminary Approach / Actions .....	48

#### LIST OF FIGURES

Figure S.1:	Project Location .....	2
Figure S.2:	Regional Communities and First Nation Reserves.....	5
Figure S.3:	Preliminary Site Plan .....	12
Figure S.4:	Preliminary Mine Plan Longitudinal View.....	13
Figure S.5:	Land Tenure and Land Use.....	25
Figure S.6:	Watercourses and Waterbodies .....	29



## **LIST OF APPENDICES**

- Appendix A: Community Input and Outcomes – Stakeholders
- Appendix B: Community Input and Outcomes – Indigenous Nations





## A. INTRODUCTION AND GENERAL INFORMATION

This document is a plain language summary of a Detailed Project Description that was prepared for the Upper Beaver Gold project. Agnico Eagle is planning to develop, operate and eventually reclaim an underground and open pit, gold and copper mine at the Upper Beaver Gold project site, located near Kirkland Lake, Ontario (see Figure S.1).

Agnico Eagle Mines, Limited (Agnico Eagle) is a senior gold mining company that has produced precious metals since 1957. It operates mines in Canada, in Finland and in Mexico, including in the Abitibi Region in Québec and has employs more than 11,000 people around the world. Agnico Eagle is committed to creating value for our shareholders while operating in a safe, and socially and environmentally responsible manner, as we contribute to the prosperity of our people, their families and the communities in which we operate. Further information is available at: <https://agnicoeagle.com>.

The Upper Beaver Gold project site was the location of mining between 1912 and 1971. Agnico Eagle currently has environmental applications in progress with provincial ministries for an advanced exploration program to collect rock from the underground areas, starting in 2022. In order to reduce environmental impacts, the new mine will expand on the original underground mine and other facilities being developed for the proposed advanced exploration program, where practical.



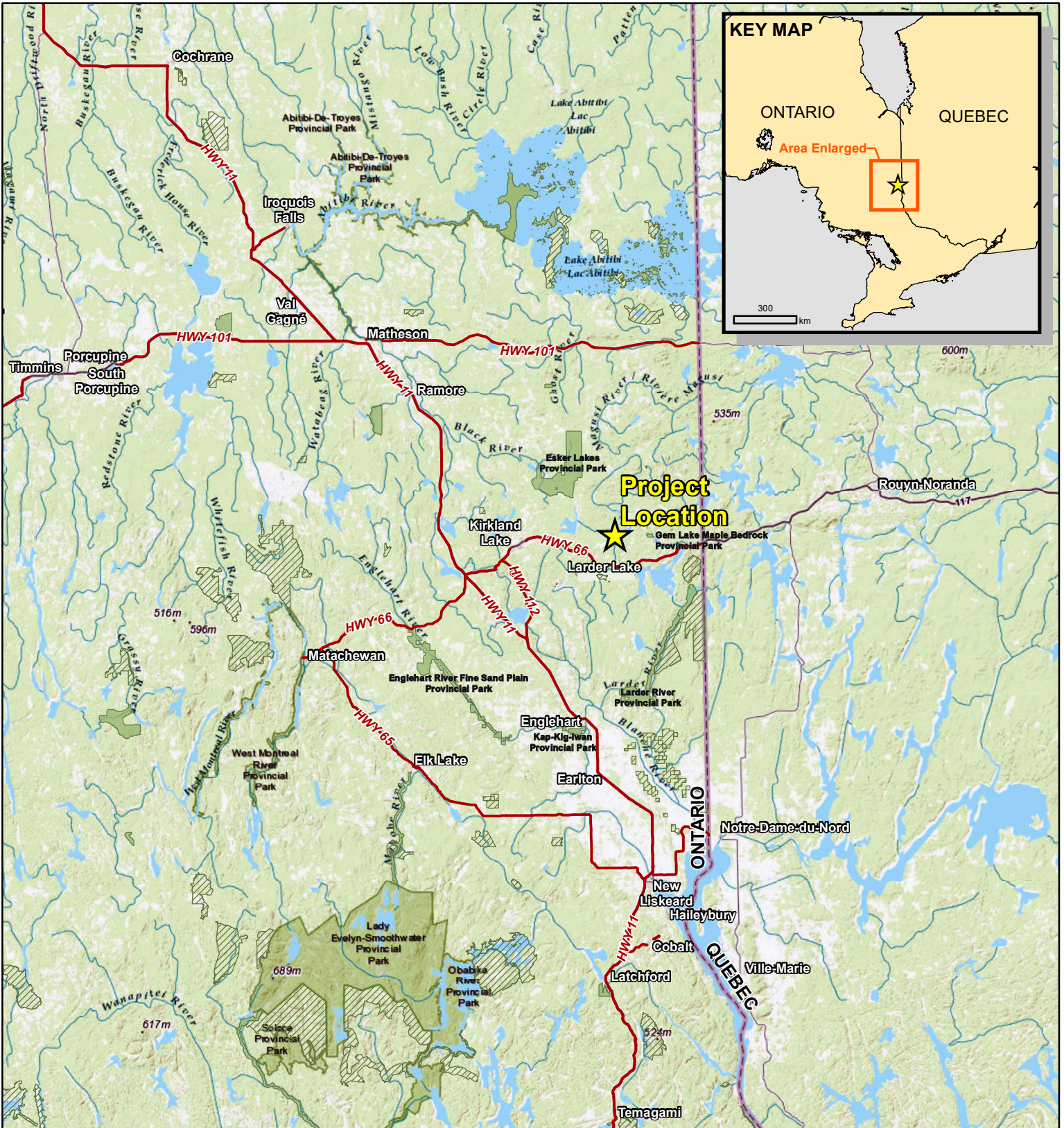
**Argonaut Mine**



**Argonaut Mine, 1926**

Agnico Eagle Mines Limited and Kirkland Lake Gold Ltd. announced on September 28, 2021, that they have entered into an agreement to combine in a merger of equals, with the combined company (to continue as Agnico Eagle Mines Limited). The two companies share a common culture of sustainable mining practices, and community engagement and support. Possible synergies with the Upper Beaver Gold project will be further assessed after the completion of the merger, and if conclusive, will be integrated to the Upper Beaver project design and Impact Assessment, if required.





P:\2020\Projects\OMEMA2008Z\_Agnico\_Upper\_Beaver\IA111\_GIS\Detailed\_PD\MXD\_Maps\Project\_Location\_ES\_1.mxd

**LEGEND**

- Project Location
- Regional Highways
- Conservation Reserve
- Provincial Park

**NOTES:**

- Background topographic map information extracted from ESRI Base Map Services
- Additional park information, conservation reserve and highway information extracted from Land Information Ontario (NDMNR), Queen's Printer for Ontario, 2020/2021

**UPPER BEAVER PROJECT**

**Project Location**

Datum: NAD83  
Projection: UTM Zone 17N

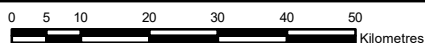


PROJECT N<sup>o</sup>: OMEMA2008

FIGURE: S.1

SCALE: 1:1,100,000

DATE: December 2021





### A.1 Project Name, Sector and Location

Project Name	Upper Beaver Gold project
Sector	Mines and minerals - gold and copper mine
Location	19 kilometres (km) east of Kirkland Lake, Ontario; see Figure S.1

### A.2 Proponent

Proponent	Agnico Eagle Mines, Limited (Agnico Eagle) <a href="https://agnicoeagle.com">https://agnicoeagle.com</a>
Corporate Contact	Daniel Paré, Vice-President, Operations - Eastern Canada Agnico Eagle Mines, Limited 93, Arseneault St., Suite 202 Val d'Or, Québec, Canada J9P 0E9 T: (819) 759-3700, 4102920 M: (819) 442-3744 <a href="mailto:Daniel.Pare@agnicoeagle.com">Daniel.Pare@agnicoeagle.com</a>
Proponent Contact	Sarah Morin, Sustainable Development and Environmental Coordinator Agnico Eagle Mines, Limited 10 200, de Preissac Rd. Rouyn-Noranda, Québec, Canada J0Y 1C0 T: (819) 759-3700 M: (819) 277-8550 <a href="mailto:Sarah.Morin@agnicoeagle.com">Sarah.Morin@agnicoeagle.com</a>
Supporting Consultant	Sheila Daniel, Principal Geoscientist Wood Environment & Infrastructure Americas 2020 Winston Park Drive, Suite 600 Oakville, Ontario, Canada L6H 6X7 M: (416) 524-5928 <a href="mailto:Sheila.Daniel@woodplc.com">Sheila.Daniel@woodplc.com</a>



## **B. PLANNING PHASE RESULTS**

### **B.1 Summary of Engagement with Stakeholders**

Potentially interested stakeholders were identified based on whether they were close to the project (living nearby or by land ownership) or have demonstrated past or current interest in similar projects or developments in the region. The following stakeholders were engaged or informed prior to and during the preparation of the Initial Project Description:

- Beaverhouse Lake cottagers and surface rights owners;
- Township of Gauthier;
- Town of Kirkland Lake;
- Township of Larder Lake;
- Citizens from the Kirkland Lake area;
- Kirkland Lake District Chamber of Commerce;
- Kirkland District Game and Fish Protection Association;
- Kirkland and District Community Development Corporation;
- Stella-Jones and Eacom Timber Company;
- Ministry of Northern Development, Mines, Natural Resources and Forestry;
- Ministry of Environment, Conservation and Parks;
- Impact Assessment Agency.

The locations of the community stakeholders listed are shown in Figure S.2.

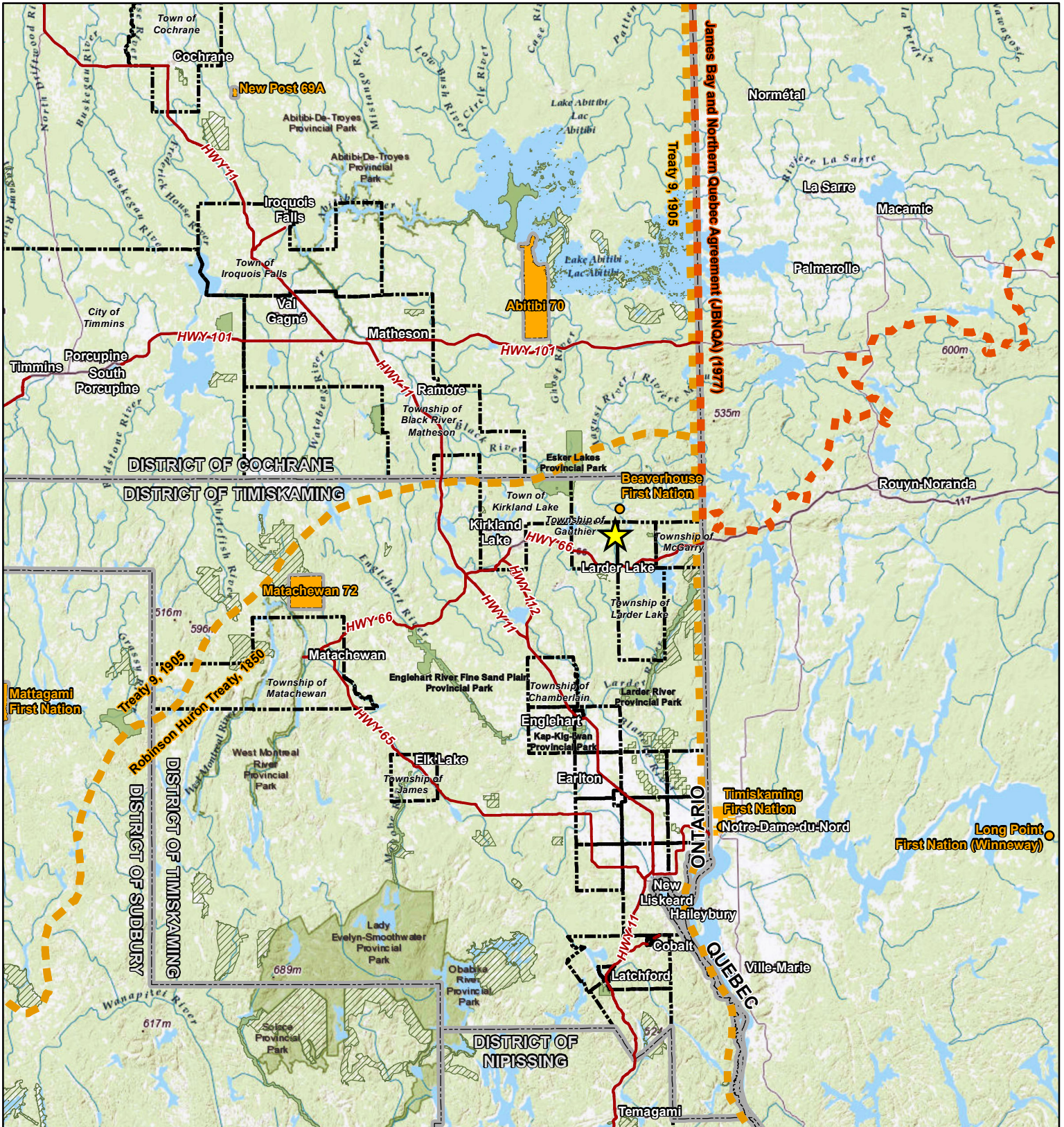
Key issues raised by stakeholders for the Upper Beaver Gold project to date include:

- Potential impacts on the cottagers' quality of life;
- Possibility of the expropriation of surrounding lands;
- Maintaining access to the land and to Beaverhouse Lake;
- Noise and dust generated by site activities;
- Road safety and road traffic;
- Water management, water quality and water elevation;
- Maximization of socioeconomic impacts;
- Dewatering of York Lake.

It is Agnico Eagle's intent to continue to engage with these and other identified stakeholders as the project progresses. Activities planned in 2021/2022 include: meetings with neighbours, presentations to local municipalities, virtual public information session, other project update meetings, information sharing by mail and email, newsletters, dedicated website (<https://upperbeaver.agnicoeagle.com/>) and other tools. A plan for future engagement will be developed at the early 2022 if an Impact Assessment is required.







P:\2020\Projects\OMEMA2008Z\_Agnico\_Upper\_Beaver\IA111\_GIS\Detailed\_PD\MXD\_Maps\LocalComm\_FN\_ES\_1.mxd

**LEGEND**

- Project Location
- Regional Highways
- Upper Tier Municipal Boundary
- Lower Tier Municipal Boundary
- Conservation Reserve
- Provincial Park
- First Nation Reserve/Community
- First Nation Treaty Boundary (modern)
- First Nation Treaty Boundary (historic)

**NOTES:**  
 - Background topographic map information extracted from ESRI Base Map Services  
 - Additional park information, conservation reserve, highway information and Upper and Lower Tier Municipal data extracted from Land Information Ontario (NDMNR), Queen's Printer for Ontario, 2020/2021  
 - First Nation Treaty Boundaries (historic) extracted from "Historic First Nations Treaties in Canada - GIS dataset of pre 1930 treaty boundaries", 2000, Global Forest Watch Canada.  
 - First Nation Treaty Boundaries (modern) extracted from Government of Canada Open Portal, 2019

Datum: NAD83  
 Projection: UTM Zone 17N



**UPPER BEAVER PROJECT**

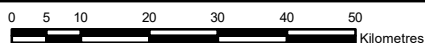
**Regional Communities and First Nations**

PROJECT N<sup>o</sup>: OMEMA2008

FIGURE: S.2

SCALE: 1:1,100,000

DATE: December 2021





## **B.2 Summary of Engagement with Indigenous Nations**

Agnico Eagle will continue to work with the local Indigenous Nations to establish a mutually beneficial, cooperative and productive relationship. Agnico Eagle used the following criteria to identify the potentially interested Indigenous Nations for the Upper Beaver Gold project:

- Communities previously identified by the Ministry of Northern Development, Mines, Natural Resources and Forestry to be consulted for exploration activities;
- Closeness to the project site;
- Past or current interest in similar projects or developments in the region;
- Historic and current land use where new facilities or work are proposed;
- Potential to be affected by the project.

The following list shows Indigenous Nations that may be affected by the project with whom Agnico Eagle has engaged with prior to and during preparation of the Initial Project Description and Detailed Project Description:

- Beaverhouse First Nation (BHFN);
- Matachewan First Nation (MFN);
- Wahgoshig First Nation (WFN);
- Timiskaming First Nation (TFN);
- Métis Nation of Ontario (Region 3; MNO).

During the engagement process conducted by the Impact Assessment Agency for the Initial Project Description, the Taykwa Tagamou Nation and Temagami First Nation indicated that carrying out the project may impact their Aboriginal and/or Treaty rights.

Locations of the related First Nation Reserves and/or communities are shown in Figure S.2. Through the long history of engagement activities for exploration and advanced exploration programs between 2009 and 2020, including by Agnico Eagle for almost ten years, no other Indigenous Nation has identified interest to be informed and engaged about the site activities.

Key issues raised to date by Indigenous Nations related or potentially applicable to the Upper Beaver Gold project include:

- Maintenance of access to sites of interest, such as the Beaverhouse Lake boat launch, the Traditional Trail and access to Beaverhouse Lake;
- Potential impacts (direct and indirect) to traditional sites;
- Consideration of Indigenous Knowledge during Impact Assessment process and respect the confidentiality of Indigenous Knowledge and Land Use information;
- Consideration of potential impacts on wildlife, and including Moose and furbearers, in the mitigation measures;
- Consideration of potential impacts on water quality, fish habitat and fish populations in the project's mitigation measures;
- Participation in baseline studies (i.e., wildlife, aquatics, etc.);
- Enhancement of positive socio-economic effects while minimizing adverse socio-economic effects.



Main topics and objectives for the Indigenous engagement activities are:

- To involve Indigenous Nations in the baseline studies process depending on each Nation’s interests and capacities;
- To validate and adjust, if needed, the engagement activities planned for 2021 and 2022 and adjust them if deemed necessary;
- To collaborate with the Indigenous Nations to document Indigenous Knowledge;
- To validate with Indigenous Nations regarding interpretation and use of Indigenous Knowledge in the Impact Statement;
- To inform the Indigenous Nations on proposed activities and work through meetings (virtual and face to face), by mail and email;
- Information sharing by mail, email, newsletters and using other tools.

Agnico Eagle intends to engage with Indigenous Nations as the project continues to progress. A plan for future engagement will be developed in 2022 if an Impact Assessment is required. Agnico Eagle is committed to ongoing engagement with Indigenous Nations respects and reflects the culture, protocols and values, as well as traditional land use practices of Indigenous Nations. Agnico Eagle understands that the COVID-19 pandemic has put a strain on meaningful engagement with Indigenous Nations. Agnico Eagle will adapt methods of engagement and will host face-to-face meetings with Indigenous Nations when they are open to meeting under the proper health protocols.

### B.3 Summary of Issues

As part of the federal Impact Assessment Planning Process, the Impact Assessment Agency provided Agnico Eagle with a Summary of Issues based on the Agency consultation after the acceptance of the Initial Project Description. The issues identified by the Agency are consistent with what Agnico Eagle has heard through their consultation and engagement activities. The following table (Table S.1) provides a summary of some of comments provided and Agnico Eagle’s response.

**Table S.1: Summary of Representative Comments in Summary of Issues and Responses**

Summarized Comment	Summarized Response
Need for completed updated baseline studies to identify if the Project will have positive or adverse effects	Environmental baseline studies have been completed previously or are ongoing for a number of topics, including related to fish and fish habitat, wildlife including migratory birds, Species at Risk, air quality, ambient light, sound, geochemistry, water quality and sediments, hydrology, groundwater and socio-economics.
Where potential effects and mitigation measures are proposed, need for characterization of residual effects	If an Impact Assessment is required, the potential negative and positive effects of the project on the environment will be assessed and mitigation measures proposed, using a standardized methodology.
Need for further information on net greenhouse gas emissions for each separate phase of the Project (e.g. carbon footprint)	An assessment of potential greenhouse gas emissions will be conducted for each phase of the project aligned with the Strategic Assessment on Climate Change if an Impact Assessment is determined to be required.



Summarized Comment	Summarized Response
Need for further information on potential impacts on human health from exposure to air pollutants and increased noise levels	All site emissions and discharges, including air and noise emissions, will be required to meet the strict Ontario regulatory requirements. Should an Impact Assessment be required, potential effects from air emissions and noise levels will be assessed and a description of proposed mitigation / monitoring measures provided.
Potential effects on current and future use of lands such as for fishing, hunting, harvesting and gathering, teaching, and knowledge sharing; resources; and access to sites of cultural significance.	Agnico Eagle is collaborating with local Indigenous Nations to support the development of their Indigenous Knowledge studies (inclusive of land and resource use) that will inform the evaluation of potential effects in the Impact Statement, if an Impact Assessment is required.
Need for further information and design of all proposed project components	Further information regarding the proposed project will be provided in the Impact Statement if an Impact Assessment is required. Where appropriate alternative methods will also be described in order to provide additional clarity on why the preferred project components were selected.
Need for an analysis of alternative means for carrying out the Project, including mining without draining York Lake and tailings storage	Technically and economically feasible alternative means will be considered during future regulatory documentation, including for mining and tailings storage. Based on expert studies completed during 2020, Agnico Eagle has not identified any feasible alternative means of carrying out the Project without diverting Ava Lake / Misema River around York Lake.
Potential cumulative effects - due to current and historical mineral exploration activities, existing mine hazards, nearby forestry activities, downstream water control structures and hydroelectric developments	Agnico Eagle is purposefully developing the Upper Beaver Gold project, to expand and/or modify facilities that are being developed during the advanced exploration program in order to minimize environmental disturbance as practical. Cumulative effects will be assessed in the Impact Statement in accordance with the Impact Assessment Agency of Canada guidance, if an Impact Assessment is required.
Need for further study on the effects of, and resilience of, project infrastructure - including tailings storage facilities, waste management areas, site drainage and water diversion structures - to climate change	The Upper Beaver Gold project has an expected life of approximately 14 years or more years of operation, plus construction, decommissioning and closure phases. The project does not include any long term water impoundments. Expected climatic conditions will be fully considered in the design of project facilities and infrastructure as applicable, including any potential changes from the current climate due to climate change based on accepted models.



Summarized Comment	Summarized Response
Need for information on how the Proponent will prevent accidents and malfunctions. Need for information on emergency response plans and procedures	Agnico Eagle considers safety of people and the environment at the Upper Beaver site a priority. The open pit mine is proposed in order to remove a known hazard related to the stability of historic underground workings, as well as historic mining wastes in the lake. Agnico Eagle will establish appropriate, practical emergency response plans and procedures prior to construction.
Engagement activities must be respectful of Indigenous protocols and knowledge. Notification of engagement activities must be provided in advance to Indigenous groups	Agnico Eagle will continue to engage with Indigenous Nations in a means acceptable to the communities, promoting advanced notification and time for participation through culturally appropriate means, recognizing that there could potentially be regulatory time constraints.
Need for further information on efforts to engage with and seek input from the local population, including nearby property owners, and downstream stakeholders with regional interests.	Agnico Eagle has been engaging with the local population and other stakeholders for nearly ten years. Agnico Eagle will produce an inclusive Engagement Plan for 2022 to seek input. Engagement activities will be selected to ensure that comments can be document so that they can be addressed properly by Agnico Eagle.

A copy of the Summary of Issues and responses provided by Agnico Eagle is appended to the Detailed Project Description. Where applicable, additional information has been provided in this summary and/or in the detailed project description.

#### **B.4 Regional Studies / Assessments and Strategic Assessments**

There are no regional studies or Regional Assessments close to the location of the proposed project. The Detailed Project Description fully considered the Strategic Assessment of Climate Change developed by Environment and Climate Change Canada.



## **C. PROJECT INFORMATION**

### **C.1 Purpose and Need for the Project, and Potential Benefits**

The purpose of the Upper Beaver Gold project is to produce gold doré bars and copper concentrate for sale, by constructing and operating a mine, processing plant and associated facilities (the Upper Beaver Gold project). Doré bars and copper concentrate are semi-pure products of gold and silver, and copper that will be trucked off site for further purification.

Gold and copper are metals with many applications, including:

- Building construction, including wiring (copper);
- Art, jewellery, medals and tableware (copper and gold);
- Computers and electronics (copper and gold);
- Medical tools and devices (copper and gold);
- As a monetary exchange medium or coins (gold and copper).

The demand for copper and gold is anticipated to grow in coming years.

The corporate strategy of Agnico Eagle is to maintain steady production across all of its mines. The Upper Beaver Gold project is intended to help meet this corporate need and provide a return on investment to Agnico Eagle shareholders. On a broader scale, metal mining is needed because it provides significant economic benefits to Ontario and Canada, and provides a large number of direct jobs and indirect employment.

The Upper Beaver Gold project is expected to have a positive effect on the local and regional economy. During all consultations to date, Agnico Eagle has received questions about jobs, business and training opportunities. Up to approximately 400 to 600 permanent jobs are expected, if the mine is approved to proceed, as well as a large number of contracts for qualified contractors in the region. The project is not expected to result in a large change in regional or local population, but may contribute growth for communities within commuting distance from the site.

### **C.2 Applicable Physical Activities Regulation Provisions**

The following provisions of the Physical Activities Regulations (SOR/2019-285) of the *Impact Assessment Act* may apply to the Upper Beaver Gold project based on the current preliminary project design:

*18 The construction, operation, decommissioning and abandonment of one of the following:*  
*(c) a new metal mine, other than a rare earth element mine, placer mine or uranium mine, with an ore production capacity of 5,000 tonnes per day or more*  
*(d) a new metal mill, other than a uranium mill, with an ore input capacity of 5,000 tonnes per day or more.*

*60 The construction, operation, decommissioning and abandonment of a new structure for the diversion of 10,000,000 cubic metres per year or more of water from a natural water body into another natural water body.*





As required by the Regulation, Agnico Eagle submitted an Initial Project Description and is submitting a Detailed Project Description so that the Impact Assessment Agency can determine if an Impact Assessment is required.

### **C.3 Activities, Infrastructure, Structures and Physical Works**

The proposed Upper Beaver Gold project will expand upon and/or modify historical underground workings, as well as facilities being developed as part of the proposed advanced exploration program, where practical, in order to mitigate and/or reduce environmental impacts. A preliminary site plan is provided in Figure S.3 and a cross section view of the mine development is shown in Figure S.4.

The Upper Beaver Gold project site has a long mineral exploration and development history. The main periods of mining were from 1912 to 1935 (La Mine d'Or Huronia and Argonaut Gold Mines), and from 1965 to 1971 (Upper Beaver Gold Mines). These mines have some historic liabilities, including openings to the underground, building foundations and mine wastes (rock and tailings). By establishing the open pit, Agnico Eagle will mitigate some of these historic liabilities, including stability issues from historic underground mine development, and historic tailings and mine rock in York Lake.

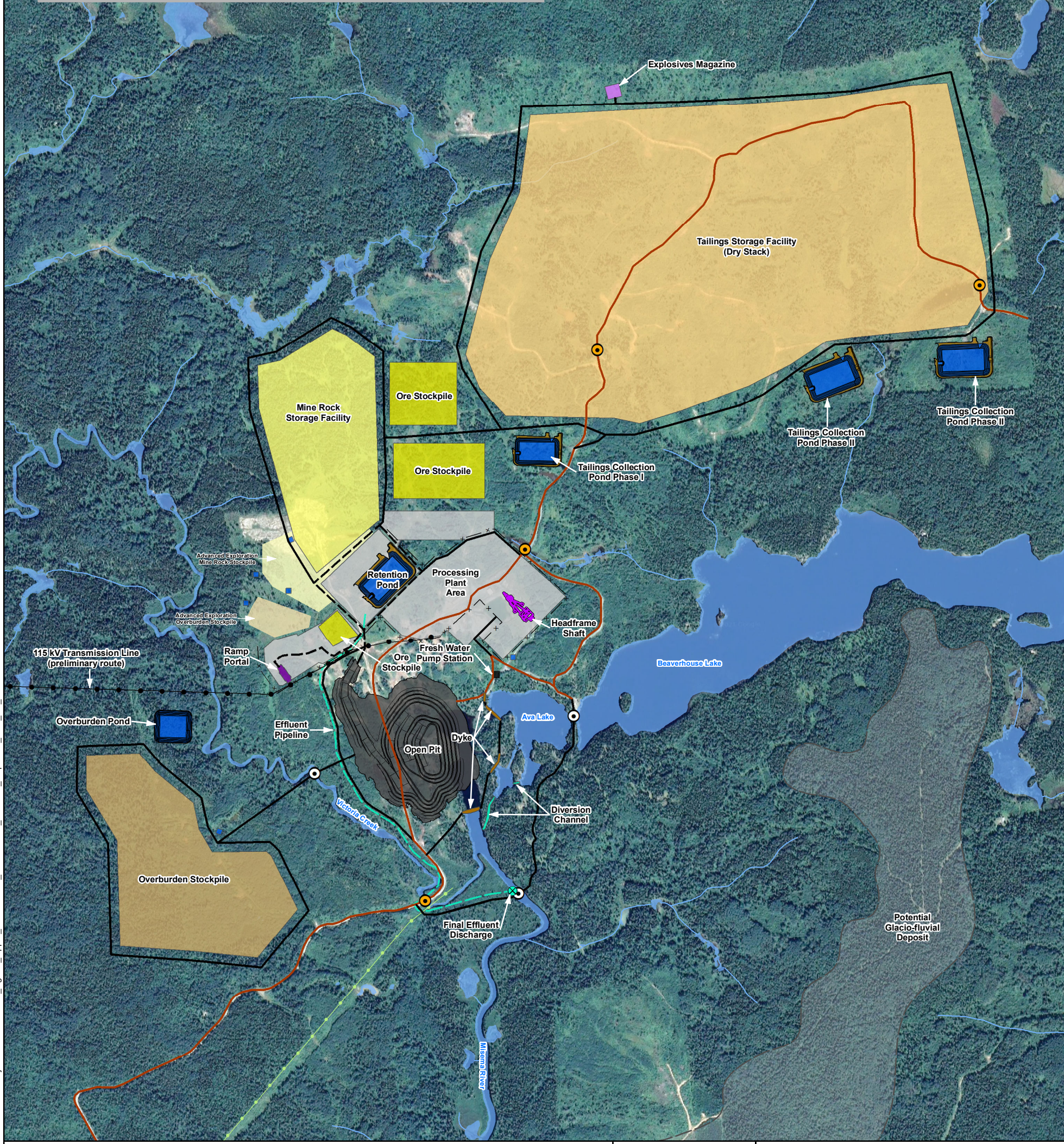
Agnico Eagle has requested approvals from the provincial ministries for an advanced exploration program at the Upper Beaver Gold project site that could be started in 2022. The advanced exploration program will include:

- Underground exploration development, including a ramp and surface opening (portal), shaft to underground and headframe / hoist house, underground exploration workings and ventilation openings (raises from underground to surface);
- Office, change room, maintenance shop, service building, explosives magazine and gatehouse (prefabricated steel, modular or fabric buildings);
- Stockpiles of overburden (250,000 tonnes), mine rock (2,000,000 tonnes) and ore (60,000 tonnes);
- Fresh water pumping station and pipeline;
- Sewage treatment plant;
- Ditching, pond(s), water treatment plant and effluent discharge pipeline;
- Diesel and propane fuel tanks;
- Laydown areas, parking and on-site roads;
- Security fence;
- Refurbishment of a 44 kilovolt (kV) power line connecting to a local power distribution network and emergency generator;
- Improvements to the existing site access road (Beaverhouse Road), including culverts, if needed.

Once the advanced exploration program is approved, ore samples (less than 60,000 tonnes) can be taken from the underground workings to be trucked off site for testing to validate various parameters, to support the final project design and get internal approval to go ahead with the Upper Beaver Gold project. Workers for the advanced exploration project, like for the future mine, will commute to the site daily and live in local communities.





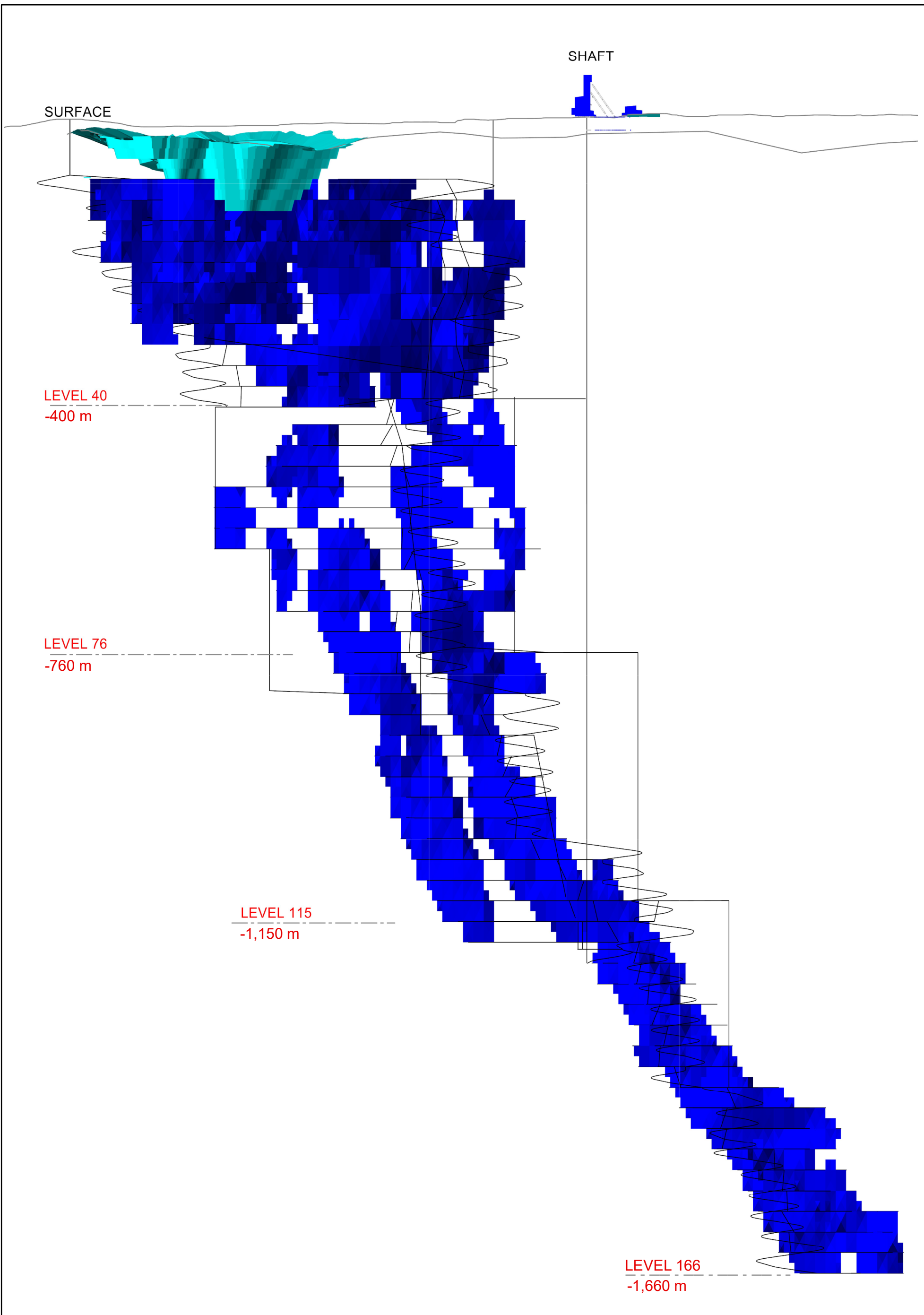


<b>LEGEND</b> <ul style="list-style-type: none"> <li><span style="display: inline-block; width: 15px; height: 15px; background-color: grey; border: 1px solid black;"></span> Open Pit</li> <li><span style="display: inline-block; width: 15px; height: 15px; background-color: lightgrey; border: 1px solid black;"></span> Processing Plant Area</li> <li><span style="display: inline-block; width: 15px; height: 15px; background-color: orange; border: 1px solid black;"></span> Tailings Storage Facility</li> <li><span style="display: inline-block; width: 15px; height: 15px; background-color: lightgreen; border: 1px solid black;"></span> Ore Stockpile</li> <li><span style="display: inline-block; width: 15px; height: 15px; background-color: yellow; border: 1px solid black;"></span> Mine Rock Storage Facility</li> <li><span style="display: inline-block; width: 15px; height: 15px; background-color: brown; border: 1px solid black;"></span> Overburden Stockpile</li> <li><span style="display: inline-block; width: 15px; height: 15px; background-color: purple; border: 1px solid black;"></span> Explosives Magazine</li> <li><span style="display: inline-block; width: 15px; height: 15px; background-color: pink; border: 1px solid black;"></span> Dyke</li> <li><span style="display: inline-block; width: 15px; height: 15px; background-color: blue; border: 1px solid black;"></span> Pond</li> <li><span style="display: inline-block; width: 15px; height: 15px; background-color: cyan; border: 1px solid black;"></span> Diversion Channel</li> <li><span style="display: inline-block; width: 15px; height: 15px; background-color: purple; border: 1px solid black;"></span> Portal Ramp</li> <li><span style="display: inline-block; width: 15px; height: 15px; background-color: pink; border: 1px solid black;"></span> Headframe Shaft</li> <li><span style="display: inline-block; width: 15px; height: 15px; background-color: grey; border: 1px solid black;"></span> Fresh Water Pump Station</li> <li><span style="display: inline-block; width: 15px; height: 15px; background-color: lightgrey; border: 1px solid black;"></span> Potential Glacio-fluvial Deposit</li> <li><span style="display: inline-block; width: 15px; height: 15px; border-bottom: 1px solid black;"></span> 115 kV Transmission Line (preliminary route)</li> <li><span style="display: inline-block; width: 15px; height: 15px; border-bottom: 1px solid black;"></span> Security Fence</li> <li><span style="display: inline-block; width: 15px; height: 15px; border-bottom: 1px solid cyan;"></span> Effluent Pipeline</li> <li><span style="display: inline-block; width: 15px; height: 15px; border-bottom: 1px solid green;"></span> Final Effluent Discharge</li> <li><span style="display: inline-block; width: 15px; height: 15px; border-bottom: 1px solid brown;"></span> Existing Road / Trail</li> <li><span style="display: inline-block; width: 15px; height: 15px; border-bottom: 1px dashed black;"></span> Advanced Exploration Road</li> <li><span style="display: inline-block; width: 15px; height: 15px; border-bottom: 1px solid black;"></span> Proposed Road</li> <li><span style="display: inline-block; width: 15px; height: 15px; border: 1px solid black; border-radius: 50%;"></span> Potential Water Crossings (Culverts or Bridges)</li> <li><span style="display: inline-block; width: 15px; height: 15px; border: 1px solid black; border-radius: 50%;"></span> Existing Water Crossings</li> <li><span style="display: inline-block; width: 15px; height: 15px; background-color: lightyellow; border: 1px solid black;"></span> Advanced Exploration Overburden Stockpile</li> <li><span style="display: inline-block; width: 15px; height: 15px; background-color: yellow; border: 1px solid black;"></span> Advanced Exploration Mine Rock Stockpile</li> <li><span style="display: inline-block; width: 15px; height: 15px; border-bottom: 1px solid green;"></span> 44 kV Existing Powerline</li> </ul>		<b>NOTES:</b> - Site plan layout shown was provided by Agnico Eagle, "005 Site Preparation 210 General Arrangement Plan Upper Beaver Site Layout (Production)" 30108-005-210-001_RF. - Waterbodies and watercourse extracted from LIO, NDMNRF and modified to match site plan layout provided by Agnico Eagle; to be field confirmed. - Aerial imagery extracted from Google Earth Pro, 2019.	 UPPER BEAVER PROJECT  <b>UPPER BEAVER GOLD PROJECT</b> Preliminary Site Plan
Datum: NAD83 Projection: UTM Zone 17N		PROJECT N°: OMEMA2008 SCALE: 1:13,500	
		FIGURE: S.3 DATE: December 2021	

P:\2020\Projects\OMEMA2008Z\_Agnico\_Upper\_Beaver\IA\11\_GIS\Detailed\_PD\MXD\_Maps\Site\_Plan\_ES\_15.mxd



P:\2020\Projects\OMEMA2008Z\_Agnico\_Upper\_Beaver\IA\11\_GIS\Detailed\_PD\MXD\_Maps\Mine\_Plan\_ES\_1.mxd



**LEGEND**

- Open Pit
- Mineralized Area

NOTES:  
- Mine plan layout shown was provided by Agnico Eagle

Datum: NAD83  
Projection: UTM Zone 17N



**UPPER BEAVER GOLD PROJECT**

**Preliminary Mine Plan  
Longitudinal View**

PROJECT N°: OMEMA2008

FIGURE: S.4

SCALE: NTS

DATE: December 2021

### C.3.1 Proposed Mine Facilities and Infrastructure

The major mine facilities for the Upper Beaver Gold project are summarized in Table S.2 and described in comparison to the advanced exploration program facilities. The placement of proposed facilities for the Upper Beaver Gold project fully consider the location and stability of historic underground workings. Where appropriate, advanced exploration facilities will be utilized and/or expanded on the as practical to minimize environmental effects. Advanced exploration facilities not required or modified for the mine, are anticipated to be reclaimed during the mine operation phase.

**Table S.2: Preliminary List of Mine Facilities and Comparison to Advanced Exploration Facilities**

<b>Proposed Mine Facility</b>	<b>Description</b>
<b>Underground mine</b>	
- Shaft and hoist room	Minor modifications to the Advanced Exploration Program (AEP) facility
- Surface portal and ramp	Use of the AEP portal; ramp will be extended at depth
- Underground workings	Expansion of historic and AEP underground workings
- Ventilation intake and exhaust raises	Use of the AEP raises and new intake (1) and exhaust (1) raises
- Compressor building	Minor modifications to AEP facility
- Mine dry (change room)	New building
<b>Open pit</b>	
- Open pit	New open pit partly at the existing York Lake location
<b>Misema River diversion</b>	
- Diversion channels	Routing Misema River around the open pit, two new channels about 25 and 125 m length proposed
- Diversion dykes	Routing Misema River around the open pit, four new, low height, dykes of 10 to 75 m length proposed
<b>Stockpiles</b>	
- Mine rock	Expansion to the AEP stockpile
- Overburden	New overburden stockpile
- Organic soil	New organic soil stockpile
- On-site (uncrushed) ore	New ore stockpiles
- Low grade ore	New low grade ore stockpile
- Off-site ore	Potential new stockpile for ore trucked to site from other mine(s)
<b>Processing plant area</b>	
- Crushing facilities	New facility; primary and secondary crushers with conveyors
- Crushed ore dome	New facility
- Mill (processing facility)	New facility
- Paste / backfill plant	New facility located in mill
- Office	New facility
- Laboratory	New facility
- Electrical / mechanical shop	New facility
<b>Tailings</b>	
- Tailings storage facility	New facility



<b>Proposed Mine Facility</b>	<b>Description</b>
<b>Other primary buildings / facilities</b>	
- Trade / maintenance shop	AEP facilities may be used or expanded upon, if needed, or new facilities may be developed
- Warehouse / storage building(s)	
- Laydown, parking and yard areas	Expansion to AEP areas
- Contractor office / area	New facility
- Explosive storage – surface	New facility
- Explosive storage – underground	Potential new facility or re-use of the AEP facility
<b>Water management</b>	
- Primary retention pond	Potential expansion of AEP facility
- Ditching and water collection ponds	Four or more new ponds with ditching and related pumps and pipelines
- Water management / treatment plant	Expansion of the AEP facility or a new facility
- Fresh water pump house	Potential expansion of AEP facility on Beaverhouse Lake
- Potable water treatment plant	Potential new facility or re-use of the AEP facility
- Effluent discharge pipeline, potentially with diffuser at outfall	Potential use or expansion of the AEP effluent pipeline, anticipated to discharge to the Misema River downstream of Ava Lake diversion channel and Victoria Creek confluence
<b>Waste management</b>	
- Temporary solid waste storage	Potential expansion of AEP facility
- Domestic sewage treatment	Potential expansion of AEP facility
- Demolition (non-hazardous) landfill	Potential new facility development for the closure phase of the mine
<b>Power supply</b>	
- Emergency generator(s)	Potential expansion of AEP facility
- On-site power distribution	Expansion of the AEP power distribution system on site
<b>Fuel and chemicals</b>	
- Chemicals	Storage will be required for the chemicals used in ore processing
- Propane tank farm	Potential expansion of AEP facility
- Diesel fuel tanks	Potential expansion of AEP facility
<b>Other on-site infrastructure</b>	
- Security gatehouse / fencing	Expansion of AEP facility
- Scale	New facility
- On-site access / haul roads	Expansion of AEP facilities
- Cottager / land users bypass road	New facility
- Other pipelines	Expansion of AEP facility
- Core shack	New facility





Proposed Mine Facility	Description
<b>Off-site infrastructure</b>	
– Extension of access road to site	Local re-routing at site of exiting road required
– Refurbished 44 kV line	Continued use until transmission line available
– 115 kV electrical substation	At regional grid connection
– 115 kV transmission line	New line, connected to regional grid
– Aggregate operation	A sand and gravel pit may be developed nearby to provide construction materials; location to be determined. Agnico Eagle has identified a potential aggregate source area (Figure S.3).
<b>Facilities not planned for the Mine</b>	
– Explosive manufacturing	No explosives manufacturing on site
– Accommodations	No (workers will live in local communities and commute daily to site)

### Underground Mining

The proposed underground mine will expand on the historical and advanced exploration underground workings. During mining, ore will be broken up by drilling and blasting, and will be brought to the surface either by trucking up the ramp or by means of the shaft. People will also access to the underground workings by means of the ramp, but primarily by shaft. Extracted ore from the underground mine will be transported to the surface for crushing and processing in an on-site plant. A portion of the rock that is not ore will be re-used to backfill the underground mine openings. Mine rock that cannot reasonably be re-used or kept underground will be brought to the surface and stored in a stockpile.

### Open Pit Mining

Part of the ore to be mined is located less than 30 metres below York Lake in an area already mined historically. There is a concern that the sediments and fractured rock between the lake and the ore body might collapse into the mine. If that happened, it could directly affect worker safety and could cause the York Lake to flow into the underground mine. Through expert studies, it was determined that it would be best to divert the water that currently flows from the Ava Lake, through York Lake into the Misema River, directly from Ava Lake into the Misema River. The water will be diverted around York Lake by means of diversion channels, with dykes placed, as needed, to retain the natural water level of Ava Lake and upstream waterbodies like Beaverhouse Lake. This is the only option that would allow the Upper Beaver Gold project to proceed and leave the site in a better condition for future public access from the perspective of historic underground mine stability.

The conceptual design has four short dykes (approximately 10 to 75 metres in length) placed at the west end of Ava Lake and below York Lake, and two diversion channels (25 and 125 metres in length) joining Ava Lake directly to the Misema River downstream of York Lake (Figure S.3). Once York Lake is isolated, and the fish are removed, an open pit will be developed to remove the ore, as well as the historical tailings, sediments and rock previously under the lake. The open pit will be about 100 metres in depth and 300 metres in diameter. Development of the open pit will allow rehabilitation of the historic tailings and mine rock currently located in and beside York Lake. When the mine eventually closes, the open pit may be refilled with water to create a larger lake at the current York Lake location.



Both the underground and open pit mine will operate continuously (24 hours per day, every day), year-round, except for periodic maintenance and similar operational disruptions. The pit will be in operation for only the first four or five years of operation. Based current information regarding the ore body, the overall life of the mine could extend 14 years or more.

### **Stockpiles**

Ore, mine rock and overburden from mining, along with overburden stripped during general site development, will be stored in stockpiles on the surface. Preliminary storage capacities of the stockpiles are:

- Uncrushed ore stockpile: approximately 0.3 to 0.6 million tonnes;
- Mine rock stockpile: approximately 11 million tonnes;
- Overburden and organic soil stockpiles: approximately 1.5 million tonnes.

A low grade ore stockpile and potentially a temporary stockpile for off-site ore transported to the site for processing may also be created. Runoff from the stockpiles will be collected in ditches / ponds and will be re-used for ore processing, or treated to meet discharge criteria (if the criteria are not already met), and discharged to the environment.

### **Ore Processing**

Ore from the ore stockpile will be crushed down to the size needed for processing in crushers and conveyed to a storage dome for temporary storage. Ore from the dome will be conveyed to the processing plant where the gold and copper will be extracted from the ore. The plant has been placed to avoid potential ore resources, and where geotechnical investigations indicate the presence of stable bedrock at or near the surface. Related exterior and interior tankage will be designed to ensure that any spillage is captured prior to release to the environment. Processing methods will entail several stages of conventional mineral processing, such as grinding, flotation and cyanidation. The processing plant has been designed to produce both doré bars and copper concentrate inside one building, using different equipment, chemicals and processes. These products will be periodically trucked to existing facilities off site for additional purification / refining, likely about one to two trucks per day.

Although not currently planned, there is also the potential that the processing plant could also process ore trucked to the site from other compatible deposits. Development of other ore bodies and transport of that ore will be required to meet all federal and provincial regulatory processes at the time, and could require completion of an additional Impact Assessment / Environmental Assessment process.

### **Tailings Storage**

The main by-product by volume from processing ore in the plant is tailings. Tailings consist of ground rock and associated process water. Tailings will be treated in the plant to make sure that any cyanide content left from the gold extraction process are very low. Some of the tailings from the plant may be mixed into a paste and pumped underground to backfill some of the underground workings. Most of the tailings slurry will be filtered to create a drier material that will be trucked to a surface storage facility (tailings storage facility), where the tailings will be stacked into a controlled pile, potentially with a conveyor-like system and bulldozer(s). Ditching and ponds will collect runoff from the dry stack tailings facility. From the ponds, the runoff will be sent to an on-site treatment plant.



### **Other Buildings and Yard Areas**

The preliminary site layout has been developed to re-use the advanced exploration program buildings and facilities, where practical (see Table S.2), avoid areas of ore resources in order to minimize land disturbance, and to provide undisturbed setbacks from existing water courses, where practical. A tradeshop / maintenance will provide space for maintenance on heavy equipment. Wash bay(s) will be present in order that trucks and other equipment can be washed to allow effective maintenance and extend equipment life with wash water that has been captured and treated. A warehouse may also be established. An explosives storage area will also be developed on site. The location of any explosives-related facility on site will follow all federal regulatory guidance.

A network of access roads for smaller vehicle and haul roads for heavy equipment will be established within the site, as needed, to access project buildings and facilities using existing roads / roads proposed for the advanced exploration, and minimizing water crossings as reasonable. Three new water crossings are currently proposed for the Upper Beaver Gold project, likely as culverts, but potentially as bridges (Figure S.3). One or two existing water crossings may also require upgrading. Parking will also be provided as workers and suppliers will drive to the mine.

### **Domestic and Industrial Wastes**

Domestic, special management and hazardous materials resulting from the construction and operation of the Upper Beaver Gold project will be shipped off-site to appropriate facilities for disposal. A demolition landfill may be established on the site for disposal of non-hazardous demolition waste created from closing the mine. Domestic sewage during the construction and operating phases will be treated by an approved method, such as in a sewage treatment plant, potentially as an expansion of the advanced exploration treatment system.

### **Water Management Facilities and Drainage Works**

Groundwater will flow naturally into the underground mine and open pit. The open pit will also collect runoff and direct precipitation. Agnico Eagle proposes to expand the water management system built for the advanced exploration program to accommodate the operating mine. The water that is collected in the mine will be pumped to a water retention pond, where it will be treated. Precipitation and surface runoff that comes into contact with mine-related facilities will be collected in ditches / collection ponds and will also be pumped to the primary retention pond. Water in the retention pond will be treated, as needed, and excess water will be discharged to the environment. The precise discharge location has not as yet been determined, but is expected to be to the Misema River downstream from the Victoria Creek inflow to the Misema River. The final location will be selected with care to make sure that the receiving water course can receive this effluent and all related regulatory requirements are met, and could potentially be the same as for advanced exploration.

Additional fresh water will be required for ore processing and a fire water supply, and is expected to be pumped from Ava Lake. A potable water treatment plant could be constructed to treat water for use on site.

### **Access**

There is an existing road that connects the site to Beaverhouse Road that has low public traffic levels. It is expected that a portion of road on site will require re-routing around the open pit. A road extension is also expected to be developed for local cottagers and other land users so that local traffic can avoid the secure area of the mine development. A preliminary route has been identified for consultation purposes,



from the existing road near the Victoria Creek crossing, across the Misema River, between Ava Lake and Beaverhouse Lake, ending near the north shore of Beaverhouse Lake (Figure S.3).

### **Power Supply**

It is expected that a 115 kV transmission line will be required to support the mine operations. If developed, it is expected that the transmission line would connect to the provincial electrical grid with a new substation potentially located approximately 6 km west of the site (Figure S.3). An emergency diesel-fired generator will also be present on the site.

### **Accommodation**

No accommodations will be developed as part of the Upper Beaver Gold project. Agnico Eagle anticipates that workers will commute daily from existing communities / residences located within about an hour's drive in Ontario and Quebec.

### **Compensatory Aquatic Habitat**

A plan for habitat compensation will be developed, which will be consulted upon and approved through a rigorous federal process, and when implemented, will mitigate effects to aquatic resources, including habitat loss, such as at York Lake.

### **Aggregate Operations**

Aggregate will be required to construct the Upper Beaver Gold project. Future aggregate needs may be met by an on-site source developed during advanced exploration and re-use of mine rock, or other means. Agnico Eagle is planning a field investigation to assess a potential aggregate source in a fluvio-glacial system identified by a geomorphology study southeast of the site. Should the investigation be successful, an aggregate operation may be developed to support the mine at the best location within the system. The investigation and any future potential aggregate extraction will occur only on Crown land and subject to obtaining the necessary authorizations.

### **Potential Design Revisions associated to Merger with Kirkland Lake Gold**

The merger of Agnico Eagle Mines Limited and Kirkland Lake Gold Ltd. creates a unique opportunity to unlock significant operational and strategic synergies along the Abitibi / Kirkland corridor. At this time, there are no proposed changes to the Upper Beaver Gold project resulting from this merger. Possible synergies with the Upper Beaver Gold project will be further assessed after the completion of the merger and, if conclusive, will be integrated to the Upper Beaver project design and Impact Assessment process.

### **C.3.2 Preliminary List of Activities**

Table S.3 provides a preliminary listing of activities associated with the construction, operation and decommissioning of the Upper Beaver Gold project.

**Table S.3: Preliminary List of Activities of the Upper Beaver Gold Project**

#### **A) Construction Phase:**

- Initiation and completion of engineering study(ies)
- Corporate decision to proceed
- Development / implementation of environmental protection and monitoring plan(s) for construction
- Ongoing engagement and consultation with stakeholders and Indigenous Nations
- Application for and receiving environment-related permits



- Hiring of individuals and contractors, and procurement of materials and equipment
- Mitigation for other construction-related effects, if / as needed
- Upgrade of the access road to site and installation of culverts / bridges, as needed
- Additional land clearing and implementation of erosion and sediment control measures
- Excavation and grading
- Movement of construction materials to site
- Construction of new site facilities and/or expansion of existing facilities (see Table 1)
- Development of compensation features, as needed
- Construction and opening of the Misema River diversion
- Transfer of fish from York Lake
- Dewatering York Lake to support pit development
- Stripping of overburden and initiation of open pit mine development
- Establishment of water management and treatment works
- Expansion of stockpiles as mine development proceeds
- Environmental monitoring and reporting, including work by Indigenous monitors as applicable

**B) Operation Phase:**

- Receiving outstanding environment-related permits
- Development and implementation of environmental protection and monitoring plan(s) for operation
- Ongoing engagement and consultation with stakeholders and Indigenous Nations
- Stockpiling of overburden and mine rock extracted from the open pit or direct use in reclamation
- Stockpiling of mine rock that has to be removed from the underground mine
- Transport of ore from the underground mine and open pit to the uncrushed ore stockpile
- Conveying of ore from the stockpile to crushers and into the storage dome
- Conveying of crushed ore into the processing plant to recover the gold and copper, and produce gold doré bars and copper concentrate that will be periodically shipped off-site for sale
- Tailings produced from processing ore will be filtered and stored in a surface facility, which will be expanded, as needed, or made into a paste for use as backfill in the underground mine
- As operations continue, the underground mine will become progressively larger below the ground surface
- As operations continue, the open pit will become progressively larger and deeper to the maximum size
- Reclamation of facilities will occur when they are no longer needed / depleted
- Studies will be completed to ensure long-term success of pit lake
- Ongoing management and treatment of excess site waters to meet regulatory requirements
- Discharge of treated excess site waters to the environment
- Ongoing management of chemicals and wastes
- Environmental monitoring and reporting, including work by Indigenous monitors as applicable
- Follow up environmental studies

**C) Decommissioning and Closure Phase:**

- Development and implementation of environmental protection and monitoring plan(s) for closure
- Ongoing engagement and consultation with stakeholders and Indigenous Nations
- Removal of mine equipment and allowing underground mine and open pit to fill with water
- Sealing of openings to underground to ensure long-term site safety
- Removal of chemicals when no longer needed for proper disposal





- Potential establishment of on-site demolition landfill for inert waste, and/or contracts for demolition waste removal
- Demolishing of facilities as no longer needed with waste managed according to regulatory requirements
- Investigate and remediate ground with spillage, if any, such as near liquid fuel storage areas
- Removal of power infrastructure when no longer needed
- Break concrete foundations down to grade or near grade
- Break up concrete and compacted ground, and puncture liners to establish free drainage
- Regrade project lands, as needed, for long-term stability and establish final surface drainage
- Place a growth material over affected areas, as needed, to ensure long-term vegetation success
- Active and passive revegetation of affected areas
- Environmental monitoring and reporting, including work by Indigenous monitors as applicable
- Cancelling environmental approvals when no longer required
- If appropriate, connect the flooded open pit to the Misema River system once the quality of the pit water meets regulatory requirements
- Return of reclamation financial assurance

#### **C.4 Capacity Estimate**

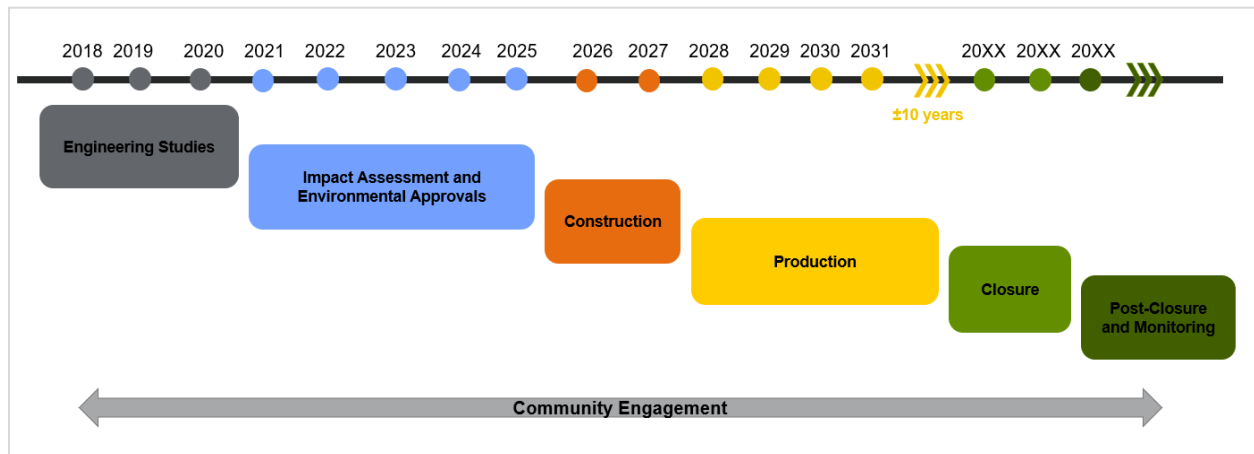
Mining and ore processing will occur at a total rate of approximately 4,000 to 10,000 tonnes per ore per day as an annual average over the life of the mine. During the years of open pit operation, there could be daily peaks of ore extraction (maximum rate of extraction) reaching up to 15,000 tonnes per day. The maximum potential ore processing plant input capacity proposed is 10,000 tonnes per day.

The Upper Beaver Gold project will also require the diversion of the Misema River around the proposed open pit. The predicted flow through the proposed diversion during the mine operations phase, based on current information, is expected to be on average approximately 91.5 million cubic metres per year (2.9 cubic metres per second). Based on a long-term modelled record, the maximum average annual flow diversion has been estimated at approximately 126 million cubic metres per year (4.0 cubic metres per second).

#### **C.5 Preliminary Schedule**

The Upper Beaver Gold project is currently being evaluated from the exploration, engineering and environmental perspectives. The stages anticipated for the Upper Beaver Gold project are as follows:





## C.6 Potential Alternatives

Agnico Eagle is a publicly traded company that proposes to develop and operate the Upper Beaver Gold project in order to provide shareholders with a reasonable return on investment from the development and operation of a mine. There are no functionally different alternatives to the mine that meet the purpose of the project, and which are technically and economically feasible. The alternative of not proceeding to develop the mine and both the negative and positive consequences of this approach will be considered.

Feasible alternative means of developing, operating and reclaiming the project will be considered during future regulatory documentation and may include the following alternatives and others:

- Mine rock, overburden and organics storage (various stockpile locations, re-use as construction and reclamation material);
- Location of processing plant and related site infrastructure (limited by location of mine, geotechnical stability, land ownership / tenure and preference to limit overall site footprint as practical; however there could be synergies with Kirkland Lake Gold operations);
- Tailings storage methods and location (dry stack facility or conventional slurry facility, co-deposition with mine rock, re-use as backfill underground, various locations including potentially off site at a Kirkland Lake Gold);
- Water management and treatment (water re-use, applicable treatment technologies);
- Effluent discharge location (Misema River various locations);
- Watercourse realignments and structures (locations of diversion channels and dykes);
- Aquatic offsetting and compensation measures (to be determined through the rigorous federal approvals process);
- Solid waste management location (existing landfill off site, or new landfill on site);
- Domestic sewage treatment method (package treatment plant or septic tile field);
- Water supply source (local lake / river or groundwater);
- Aggregate supply source (develop a dedicated aggregate resource on or near the site, re-use mine rock or purchase aggregate from suppliers);
- Site access road location (existing route, new route);
- New access to Beaverhouse Lake (to be determined through ongoing engagement);
- Power supply requirements (transmission line or diesel power, supplementary passive sources);
- Transmission line route (direct cross-country route or along distribution line);



- Mine decommissioning and closure methods:
  - Open pit (fill with water and keep isolated, fill with water and reconnect to Misema River when water quality is appropriate);
  - Demolition waste management (landfill on site or transport to existing landfill off site).

In consideration of the local site conditions, there are no alternative methods that are economically viable for:

- Mining methods (constrained by ore location and geometry, and land ownership / tenure);
- Ore processing methods (controlled by laboratory testing and analyses to obtain optimal recovery utilizing full scale proven technologies);
- Location of processing plant and related site infrastructure (limited by location of mine, land ownership / tenure and preference to limit overall site footprint as practical);
- Type and location of explosive storage and siting (strictly controlled by federal regulations and rock type / blast requirements).



## **D. LOCATION INFORMATION AND CONTEXT**

### **D.1 Geographic Coordinates**

The centroid of the proposed open pit is located at coordinates:

- Universal Transverse Mercator 5335489N, 591784E (NAD 83 Zone 17N);
- Latitude / longitude 79° 45' 56.189" W, 48° 9' 57.663" N.

A 115 kV transmission line is proposed. The preliminary endpoint coordinates are as follows:

- West endpoint: Universal Transverse Mercator: 5335857N, 585492E, (NAD 83 Zone 17N); Latitude / longitude 79° 51' 00.4675" W, 48° 10' 12.7267" N.
- East endpoint: Universal Transverse Mercator: 5335869N, 591848E, (NAD 83 Zone 17N); Latitude / longitude 79° 45' 52.7715" W, 48° 10' 09.9926" N.

### **D.2 Description of Lands and Surrounding Area**

The Upper Beaver Gold project property (as of February 1, 2021) comprises patented mining claims with surface and mining rights, mineral leases with surface and mining rights, and unpatented mining claims with mining rights only. The Upper Beaver Gold project facilities are planned to be placed on patent mining lands having both mineral and surface rights.

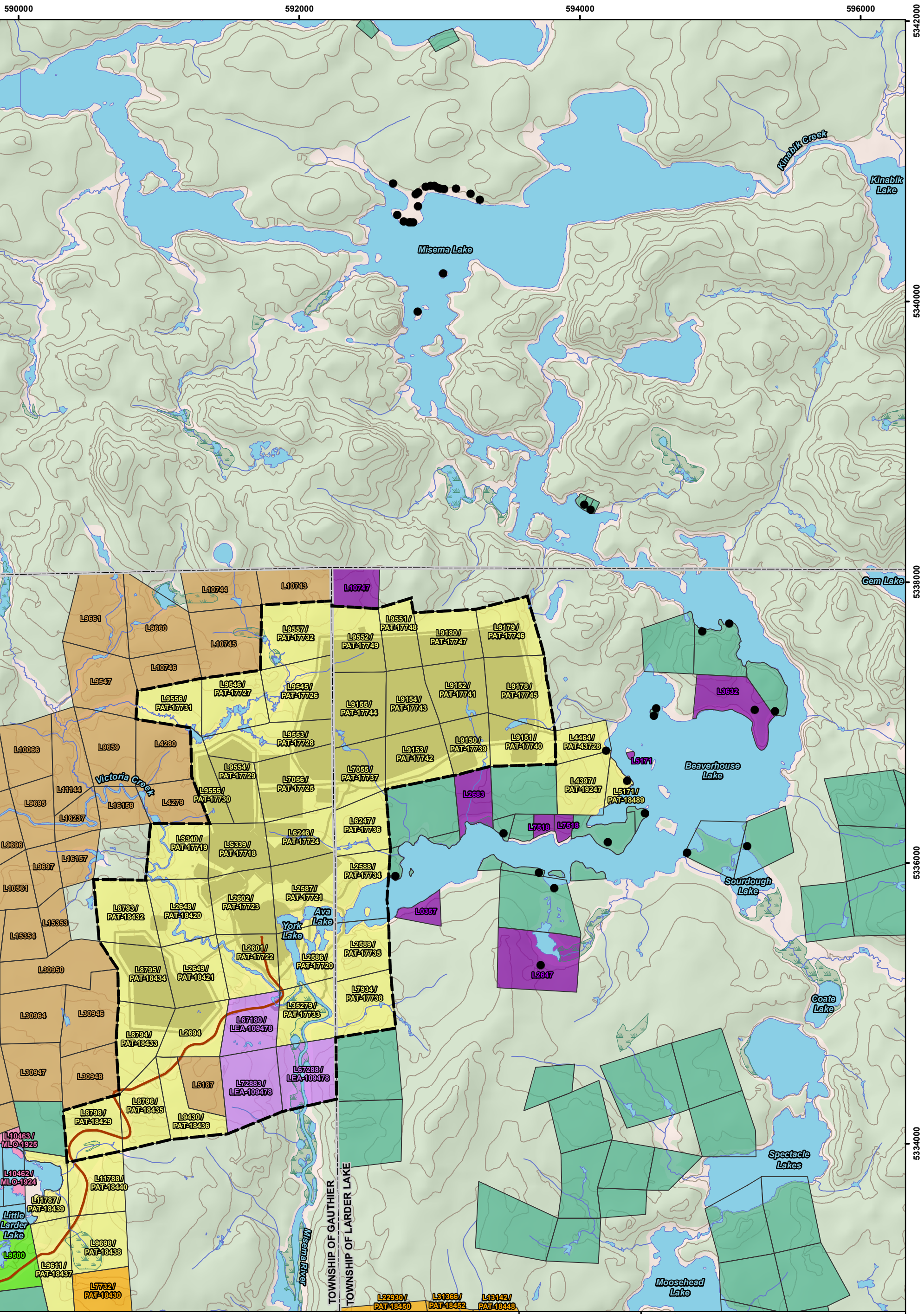
The Upper Beaver Mine property is located in an area of low population density. The nearest seasonal residences are located on Beaverhouse Lake, or close to Beaverhouse Lake, where there are approximately 19 cottages (see Figure S.5). Agnico Eagle intends to ensure that mining activities do not noticeably change Beaverhouse Lake water levels.

The closest community is Dobie, Ontario, located approximately 5 km southwest of the Upper Beaver Gold project site, and Beaverhouse First Nation settlement is located approximately 5 km to the north (see Figure S.2). The town of Kirkland Lake is located 19 km to the west and the town of Larder Lake is located 8.5 km southeast of the proposed mine site in Ontario. It is expected that workers may live in these communities and other areas, such as Englehart, Earlton and Matachewan, in Ontario, and Rouyn-Noranda, in Québec. These communities are located approximately one hour from site. These communities could therefore be impacted by the Upper Beaver Gold project. None of these communities is anticipated to receive off-site natural or biological effects.

Agnico Eagle is in ongoing discussions with local Indigenous Nations to determine historic and current, land and resource uses. Based on current knowledge, including documentation that is publicly available, Agnico Eagle understands that the Upper Beaver Gold project property is located on lands that may have been used previously for traditional purposes by the members of the BHFN, MFN, WFN, TFN and MNO Region 3.







P:\2020\Projects\OMEMA2008Z\_Agnico\_Upper\_Beaver\IA111\_GIS\Detailed\_PD\Map\_Land\_Tenure\_ES\_1.mxd

<b>LEGEND</b> Preliminary Project Boundary Proposed Mine Feature Cottages Low-lying Area Watercourse Waterbody Existing Access Road Contours (10 m intervals)		Municipal Boundary <b>Other Land Tenure</b> Township of Gauthier Land (Patent) Private Individual (Patent)		<b>Agnico Eagle Mine Ltd. Land Tenure</b> Lease - Mining and Surface Rights Licence of Occupation - Mining and Surface Rights Patent - Mining and Surface Rights Patent - Mining Rights Only Patent - Surface Rights Only Claim - Mining and Surface Rights		<b>NOTES:</b> - Site plan layout shown was provided by Agnico Eagle, "005 Site Preparation 210 General Arrangement Plan Upper Beaver Site Layout (Production)" 30108-005-210-001_RF. - Land tenure provided by Agnico Eagle, December 2018/ November 2021. - Waterbodies and watercourse extracted from LIO, NDMNRF and modified to match site plan layout provided by Agnico Eagle; to be field confirmed.		 <b>wood.</b> <b>UPPER BEAVER GOLD PROJECT</b> <b>Land Tenure and Land Use</b>	
		Datum: NAD83 Projection: UTM Zone 17N				PROJECT N°: OMEMA2008 <b>FIGURE: S.5</b> SCALE: 1:25,000 <b>DATE: December 2021</b>			



The Upper Beaver Mine property is located near the boundaries of the Treaty 9, 1905, Robinson – Huron Treaty, 1850, and James Bay and Northern Quebec Agreement, 1977 lands. The closest Indigenous community to the project site is BHFN which has a settlement on the Misema River approximately 5 km north of the project site. The Nation was not included in Treaty #9 and does not have Reserve lands. Reserves lands are shown in Figure S.2. The nearest Reserve lands are associated with the WFN, located approximately 44 km north of the project site.

Based on research and publicly available information, Agnico Eagle is aware of the following land claims and/or assertions of the Indigenous Nations that overlap or are near the site, as shown in Table S.4. Agnico Eagle will continue to engage with Indigenous Nations to determine any other assertions and whether they have assertions related to the Upper Beaver Gold project.

**Table S.4: Land Claims and Assertions of Indigenous Nations**

Indigenous Nation	Claim and Assertions
Beaverhouse First Nation (BHFN)	Wabun Tribal Council, on behalf of BHFN, has made assertions of BHFN's traditional territory. Boundaries of their traditional territory are in the vicinity of the project.
Matachewan First Nation (MFN)	In 2009, MFN filed a Treaty Land Entitlement claim indicating that the Nation did not receive all the land it was entitled to under Treaty #9 (1906). It is understood from the federal government that this claim has been settled.
Wahgoshig First Nation (WFN)	In April 2010, the Algonquin Anishinabeg Nation Tribal Council made assertions of their rights in their ancestral territory. The claim included a map of boundaries of the traditional territory, which is the same as that presented in their comprehensive land claim of 1989. The boundaries extend into Ontario and in the vicinity of the project.
Timiskaming First Nation (TFN)	In January 2013, the Algonquin Nation Secretariat made assertions of their rights and title over an area of o 34,000 square kilometres of an area that extends into Ontario, in close vicinity to the project.
Métis Nation of Ontario – Region 3 (MNO)	Métis assert a right to harvest in large areas of Ontario. The government has accommodated Métis rights on a regional basis within the Métis' harvesting territories identified by the MNO. An interim agreement between the MNO and the Ontario government (Ministry of Natural Resources and Forestry) recognizes the MNO's Harvester Card system. On April 30, 2018, the MNO and Ontario signed a new Framework Agreement on Métis Harvesting that advanced the recognition of Métis' rights in Ontario.

**Sources:**

Government of Canada, Crown-Indigenous Relations and Northern Affairs Canada. Website: Aboriginal and Treaty Rights Information System. [https://sidait-atris.aadnc-aandc.gc.ca/atris\\_online/home-accueil.aspx](https://sidait-atris.aadnc-aandc.gc.ca/atris_online/home-accueil.aspx). Accessed July 5, 2021.  
 Métis Nation of Ontario. Harvesting. <https://www.metisnation.org/registry/harvesting/>. Accessed July 5, 2021.

The *First Nations Land Management Act* enables Indigenous Nations to develop their own laws with respect to land use, the environment, and natural resources to maximize cultural and economic development opportunities with their new land management authorities. Under the First Nations Land Management, land administration is transferred to Indigenous Nations once their land codes come into effect. At this time, Agnico Eagle is not aware of any land codes currently in progress for each of the potentially affected Indigenous Nations. Throughout engagement activities with Indigenous Nations,





Agnico Eagle will determine whether the Upper Beaver Gold project will affect any land codes and will ensure that the project will support the framework set out in the land code.

Agnico Eagle will engage and work with Indigenous Nations to determine whether there are other lands set aside for the use and benefit of the Indigenous Nations that could be affected by the Upper Beaver Gold project.

There are no federal lands near the Upper Beaver Gold project property. The closest federal lands are First Nation Reserve lands located more than 40 km away:

- Abitibi Wahgoshig Reserve 70, 44 km;
- TFN Reserve, 61 km;
- Matachewan Reserve 72, 62 km.

The site is located inland, and there are no related marine or port aspects.

### **D.3 Physical and Biological Environmental Setting**

Agnico Eagle and its predecessors have been conducting environmental investigations on the Upper Beaver Gold project site since 2010. The area of influence of the project on the physical and natural environment is expected to be limited to the project footprint and nearby area; however a much larger area has been investigated prior to development, to ensure there is sufficient background information for future comparison.

#### **D.3.1 Climate, Air Quality, Noise and Light**

- Mean monthly temperatures range from a low of -14.9° Celsius in January to a high of 18.3° Celsius in July. The mean annual precipitation for Kirkland Lake is 939 millimetres. July through October is typically the wettest period.
- The Upper Beaver Gold project site is located in a remote part of northeastern Ontario and there are no significant nearby man-related sources of air emissions or noise.
- There are no existing permanent industries in the immediate area, although there are in the region.
- There may be localized areas where noise emissions reflect recreational and exploration activities.
- There are limited local man-made sources of existing light, although light is given off by ongoing exploration, and there will be light sources associated with the Upper Beaver advanced exploration program, when approved and developed.
- Pre-development (baseline) studies for air quality, noise and ambient light are being completed.

#### **D.3.2 Physiography and Geology**

- The project site is located at an elevation of about 290 to 310 metres above sea level on a plateau above local waterbodies / watercourses.
- The overall landscape is glaciated bedrock terrain, with an undulating overall topography with occasional flat areas.



- Geochemistry investigations have been completed periodically during exploration programs to date for potential ore, mine rock and tailings and are ongoing. The risk of acid rock drainage development from mine rock is considered low with appropriate management based on current information.

### **D.3.3 Surface Water and Groundwater**

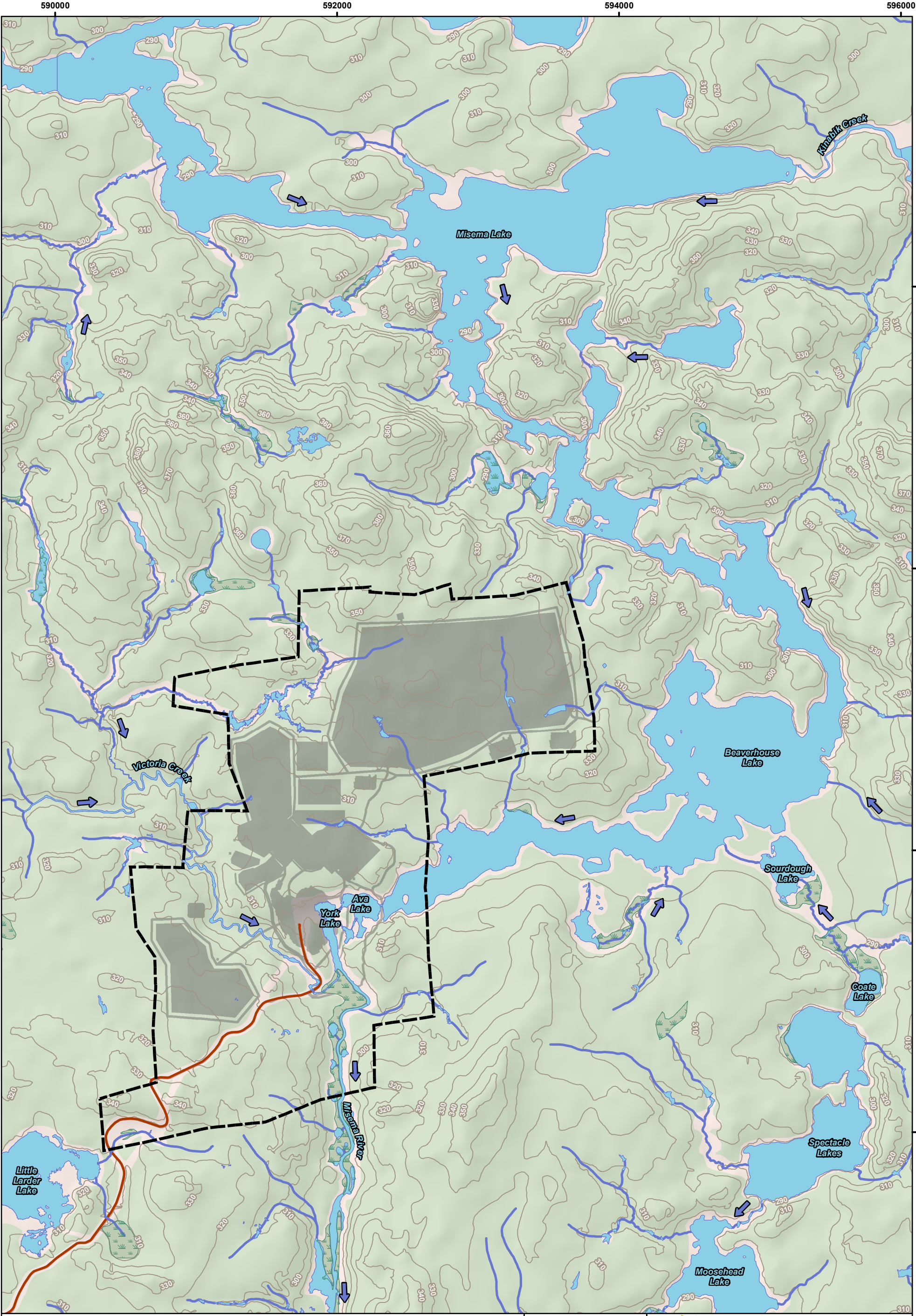
- Local watercourses and waterbodies are shown in Figure S.6. The project site is located immediately adjacent to three small lakes, which are inline with the Misema River: Beaverhouse Lake, Ava Lake and York Lake. York Lake contains residual tailings from historic mining operations.
- The Misema River flows southward into the Blanche River, which drains into Lake Timiskaming, and further south to the Ottawa River and St. Lawrence River.
- Surface water and groundwater, quality and flow studies are ongoing.
- Ongoing surface water sampling at and near the site indicates that baseline water quality is similar to other lakes in the area.
- Groundwater flows from the main site area generally mimics the local topography, and generally flows toward the local watercourses / waterbodies downslope.

### **D.3.4 Terrestrial Environment**

- The site and lands immediately around the property are representative of Boreal Forest, although some of the area shows influence of rotational forestry, and recreational and periodic mine exploration / mining activities.
- Harvested and regenerating lands are present on the site. The most common tree species are Black and White Spruce, Jack Pine, Balsam Fir, Tamarack, White Birch and Trembling Aspen.
- Wetlands cover a relatively small proportion of the area but are widespread, and include various forms of swamp, fen, and marsh. No Provincially Significant Wetlands have been identified nearby.
- Wildlife nursery area (waterfowl brood rearing habitat), late winter Moose habitat, Moose aquatic feeding area and Moose calving site were identified locally.
- Wildlife species previously observed as present on the site or during studies locally include: Moose, Beaver, Northern River Otter, Black Bear, Grey Wolf, Skunk, Raccoon, Red Fox, Eastern Chipmunk, Red Squirrel, Snowshoe Hare, Muskrat, Big Brown / Silver-haired Bat and Little Brown Myotis (a Species at Risk).
- Birds identified during previous counts are typical of northern Ontario. Over 100 different bird species were observed, or identified as probably or possibly present during breeding bird surveys, marsh monitoring or incidental identifications. The species identified included: duck, flycatcher, grouse, jay, osprey, sparrow, swallow, vireo, warbler and woodpecker.
- Amphibians and reptiles identified through previous investigations in the area include: Green Frog, Leopard Frog, Spring Peeper, Wood Frog, American Toad, Painted Turtle and Common Gartersnake.



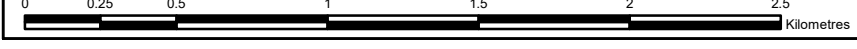




P:\2020\Projects\OMEMA2008Z\_Agnico\_Upper\_Beaver\IA\11\_GIS\Detailed\_PD\MXD\_Maps\Topographic\_Map\_ES\_1.mxd

**LEGEND**

- Preliminary Project Boundary
- Proposed Mine Feature
- Low-lying Area
- Watercourse
- Waterbody
- Existing Access Road
- Contours (10 m intervals)
- Flow Direction



**NOTES:**

- Site plan layout shown was provided by Agnico Eagle, "005 Site Preparation 210 General Arrangement Plan Upper Beaver Site Layout (Production)" 30108-005-210-001\_RF.
- Waterbodies and watercourses extracted from LIO, NDMNRF and modified to match site plan layout provided by Agnico Eagle; to be field confirmed.

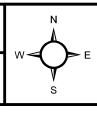
Datum: NAD83  
Projection: UTM Zone 17N

UPPER BEAVER PROJECT

## Watercourses and Waterbodies

PROJECT N°: OMEMA2008 **FIGURE: S.6**

SCALE: 1:25,000 DATE: December 2021





### **D.3.5 Aquatic Environment**

- Aquatic baseline studies were completed on the Upper Beaver Gold project site and nearby, including fish habitat and community assessment, detailed bathymetric surveys, fish collection, surface water quality and sediment analyses, and benthic invertebrates.
- Fish communities within the region have been identified as generally diverse, with cool water game fish species dominating larger lakes and river systems, and a variety of commonly occurring small bodied species being found in abundance within small creeks and beaver ponds.
- Fish communities observed in sampled watercourses reflected small-bodied forage fish, and predominantly: Pearl Dace, Finescale Dace, Northern Redbelly Dace, Longnose Dace, Fathead Minnow, Brassy Minnow, Brook Stickleback, Creek Chub, Common Shiner, Golden Shiner, Mottled Sculpin and Logperch.
- Local lakes also contained larger bodied fish, including coarse and sportfish species, such as: Northern Pike, Walleye, White Sucker, Yellow Perch, Smallmouth Bass and Brown Bullhead.
- White Sucker spawning habitat and potential Walleye spawning habitat were found in the Misema River system.

### **D.3.6 Species at Risk**

- One Species at Risk (Little Brown Myotis) and one species to be up-listed (Black Ash, not currently protected), have been viewed or identified as present within the Upper Beaver Gold project proposed development area.
- Four other Species at Risk have been identified as present in the local area off site: Whip-poor-will, Common Nighthawk, Canada Warbler and Rusty Blackbird.
- No aquatic Species at Risk have been viewed or identified as present.

## **D.4 Social, Economic and Health Context**

### **D.4.1 Site History**

Prior to the arrival of Europeans, Indigenous Peoples were active across northeastern Ontario. There has been Indigenous use of the lands locally, and based on the spatial extent and quantities of the lithic artefacts recovered during archaeological investigations to date, this includes a portage, where short-term camping or brief stopovers occurred during the pre-contact past.

Since 1912 when gold was discovered west of Beaverhouse Lake, there has been periodic, exploration and underground mine / development. The primary periods of mining-related activities on the Upper Beaver Gold project site and immediate environs have been:

- 1912 to 1935: periodic production mining from underground;
- 1965 to 1972: production mining from underground;
- 1974, 1989, 1990, 1991, 1995, 2000: exploration drilling;
- 2005 to 2014: preliminary exploration (geophysics, mapping, drilling, etc.) conducted each year;
- 2012 to 2013: attempt to start an advanced exploration program (previous owner);
- 2018 to present: preliminary exploration, engineering and environmental studies.



There is existing historical mine infrastructure, tailings and mine rock on the surface, as well as shafts, raises and adits to the underground workings.

#### **D.4.2 Social Context**

- The Upper Beaver Gold project site is located in northeastern Ontario, which has a total population of 565,000 and a density of 1.4 people per km<sup>2</sup>.
- Of that population, 30.2% live in a rural area, and 50% in small and medium-sized population centres, compared to the Ontario overall average of 69.3% of the population living in a large urban centre and 14.1% in a rural area.
- A previous study identified cultural heritage landscape and built heritage resources at the Upper Beaver Gold project site and local vicinity related to the site's mining heritage. These have been investigated by a licensed archaeologist as appropriate. Two sites (DbGw-24 and DbGw-26) have been identified as having moderate cultural heritage value or interest, and would require either excavation and documentation (not currently proposed), or protection and avoidance of development impacts.
- The local lands support recreational activities by locals and tourists, including fishing, trapping, camping and hunting.
- There are a number of seasonal cottages along the Misema River upstream of the project site and a rudimentary, public boat launch located at the west end of Beaverhouse Lake.
- There are no First Nation Reserve lands in close proximity to the site (see Figure S.2), although the site is anticipated to be within the traditional territories of a number of Indigenous Nations.
- The closest Indigenous community to the site is the BHFN settlement on the Misema River System, approximately 5 km and upstream of the site.
- According to the Crown Land Use Policy Atlas, mineral exploration and development are encouraged in the area, with some limitations.
- There are no federal parks nearby. The closest provincial park (Gem Lake Maple Bedrock Provincial Park) is located 7 km to the east of the site.

#### **D.4.3 Economic Context**

- The regional economy has been traditionally reliant upon mining and forestry industries, although mining has been the primary economic driver with the decline of the forestry industry over the last decade and longer.
- The closest mines to the Upper Beaver Gold project are:
  - Macassa Mine, Kirkland Lake Gold, Kirkland Lake, Ontario;
  - Young-Davidson Mine, Alamos Gold, Matachewan, Ontario.
- The site was mainly cut by forestry companies in the last 10 years.
- The largest proportion of workers in Kirkland Lake area are employed in the mining sector.



#### **D.4.4 Health Context**

- The Timiskaming Health Unit is located in the southern portion of northeastern Ontario with offices in New Liskeard, Kirkland Lake and Englehart.
- The Kirkland and District Hospital is located in Kirkland Lake, west of the Upper Beaver Gold project site, which consists of permanent medical staff, including general practitioners and family practice, with visiting specialists.





## **E. FEDERAL, PROVINCIAL, INDIGENOUS AND MUNICIPAL INVOLVEMENT AND EFFECTS**

### **E.1 Federal Funding or Federal Lands Needed**

There is no anticipated federal funding for the Upper Beaver Gold project. No federal lands will be used for the Upper Beaver Gold project, including Reserve lands.

### **E.2 Federal, Provincial and Municipal Environmental Approvals**

#### **E.2.1 Federal**

In addition to the potential requirement for completion of an Impact Assessment pursuant to the *Impact Assessment Act*, the Upper Beaver Gold project may require federal approvals related to the *Fisheries Act*, *Canada Navigable Waters Act* and *Explosives Act*, pending additional regulatory guidance.

Table S.4 provides a preliminary list of federal environmental approvals that could potentially be required for the Upper Beaver Gold project.

#### **E.2.2 Provincial**

The Upper Beaver Gold project may require completion of one or more provincial environmental assessment processes, depending on the final project design. It is anticipated that an environmental assessment will be required for the disposition of Crown resources (Class Environmental Assessment for Resource Stewardship and Facility Development Projects), including for the diversion of Ava Lake into the Misema River downstream of York Lake. There is also expected to be an environmental assessment requirement related to the provision of grid power to the site (Class Environmental Assessment for Minor Transmission Facilities), depending on the voltage required and grid connection location.

Table S.5 provides a preliminary listing of the provincial environmental approvals that are expected to be required to construct, operate and close the Upper Beaver Gold project site based on the preliminary project design.

There are no facilities planned in Québec, and no transboundary negative impacts from the Upper Beaver Gold project are anticipated.

#### **E.2.3 Municipal**

The project is located within the boundaries of the Township of Gauthier Official Plan and Township of Larder Lake Official Plan. Agnico Eagle is in discussions to determine if rezoning of the lands is required.



**Table S.5: Preliminary List of Potential Federal and Provincial Approvals**

<b>Department / Ministry</b>	<b>Act, Approval and Project-related Activities</b>
Environment and Climate Change Canada	<i>Fisheries Act</i> , Schedule 2 Listing (Metal and Diamond Mining Effluent Regulations): <ul style="list-style-type: none"> <li>– Storage of mineral waste covering minor tributaries that are frequented by fish</li> <li>– An alternative assessment is required and a fish habitat compensation plan</li> </ul>
Fisheries and Oceans Canada	<i>Fisheries Act</i> , Authorization for Harmful Alteration, Disruption or Destruction of Fish Habitat or Death of Fish by means other than Fishing: <ul style="list-style-type: none"> <li>– Direct impacts to fish habitat, including overprinting of waterbodies and construction of structures in waterbodies / watercourses</li> <li>– Indirect impacts to fish habitat including flow reductions</li> <li>– An approved fisheries offset plan will be required</li> </ul>
Natural Resources Canada	<i>Explosives Act</i> , Licence for Magazine: <ul style="list-style-type: none"> <li>– Storage of explosives (magazine)</li> </ul>
Transport Canada	<i>Canada Navigable Waters Act</i> : Approval under the Navigation Protection Program: <ul style="list-style-type: none"> <li>– Diversion of unscheduled watercourse to provide for safe mining</li> </ul>
Northern Development, Mines, Natural Resources and Forestry (Ontario)	<i>Mining Act</i> , Closure Plan [new]: <ul style="list-style-type: none"> <li>– Progressive reclamation and final closure of the site</li> <li>– Construction of dykes above the high water mark of watercourses if any</li> </ul>
	<i>Ontario Environmental Assessment Act</i> , Class Environmental Assessment(s) for Resource Stewardship and Facility Development Projects [new]: <ul style="list-style-type: none"> <li>– The Upper Beaver Gold project is expected to require completion of this Class Environmental Assessment, subject to regulatory confirmation</li> </ul>
	<i>Public Lands Act or Lakes and Rivers Improvement Act</i> , Work Permits: <ul style="list-style-type: none"> <li>– Construction of facilities on Crown land, including below the high water mark of waterbodies / watercourses</li> </ul>
	<i>Public Lands Act</i> , Land Use Permit: <ul style="list-style-type: none"> <li>– Temporary land tenure for facilities off the mining lease, if required</li> </ul>
	<i>Crown Forest Sustainability Act</i> , Forest Resource Licence (Cutting Permit): <ul style="list-style-type: none"> <li>– For cutting of merchantable timber for site development</li> </ul>
	<i>Fish and Wildlife Conservation Act</i> , Permit to Collect Fish for Scientific Purpose: <ul style="list-style-type: none"> <li>– Fish transfer during construction</li> <li>– Fisheries investigations during construction, operation and closure.</li> </ul>
	<i>Aggregate Resources Act</i> , Aggregate Permit: <ul style="list-style-type: none"> <li>– If the proposed field investigations are successful, Agnico Eagle may pursue an aggregate resource permit to provide aggregate</li> </ul>
Environment, Conservation and Parks (Ontario)	<i>Ontario Water Resources Act</i> , Permit to Take Water: <ul style="list-style-type: none"> <li>– Dewatering activities for construction and mine dewatering</li> <li>– Fresh water supply</li> </ul>
	<i>Environmental Protection Act</i> , Environmental Compliance Approval for Industrial and Domestic Sewage Works: <ul style="list-style-type: none"> <li>– Mine water, process water and contact water, tailings management and domestic sewage</li> </ul>
	<i>Environmental Protection Act</i> , Environmental Compliance Approval for Air and Noise: <ul style="list-style-type: none"> <li>– Atmospheric emissions from project</li> </ul>



<b>Department / Ministry</b>	<b>Act, Approval and Project-related Activities</b>
	Ontario <i>Environmental Assessment Act</i> , Class Environmental Assessment(s) for Class Environmental Assessment for Minor Transmission Facilities [new]: <ul style="list-style-type: none"><li>- Based on the preliminary project design, the Upper Beaver Gold project is expected to require completion of this Class Environmental Assessment, based on the anticipated length of the line (greater than 2 km length) in comparison to the Electricity Projects Regulation.</li></ul>

**Note:**

Although not expected, a federal *Species at Risk Act* permit could be required.





## **F. POTENTIAL EFFECTS OF THE PROJECT**

### **F.1 Changes to Fish and Fish Habitat, Aquatic Species and Migratory Birds**

Table S.6 provides a preliminary listing of changes to the following that may result from the construction, operation and closure of the Upper Beaver Gold project.

No changes to aquatic species as defined in the federal *Species at Risk Act* are anticipated, as none are known or expected to be present based on the multi-year environmental baseline studies completed to date.

### **F.2 Potential Changes to the Environment on Federal Lands or Lands outside Ontario**

There are no federal lands near the project site, and no development is planned to occur on federal lands or Reserve lands. For this reason, there are no expected changes to federal lands, including Reserve lands.

The project is not expected to result in changes to the natural and physical environment outside of Ontario, as will be confirmed through future modelling. Based on proximity of the Upper Beaver Gold project to the Ontario – Québec border, it is expected that some workers and contractors may travel to the site from Québec. In addition, there will be one to two trucks per day transporting copper concentrate to a purification / refining facility in Québec over the existing Ontario / Québec highway infrastructure.

The project is not of a scale or location, so that could result in changes to the environment outside of Canada.

### **F.3 Potential Effects to Indigenous Peoples**

- Agnico Eagle is engaging with Indigenous Nations and Peoples with respect to the construction, operation and closure of the Upper Beaver Gold project, including the determination of the potential for impacts to physical and cultural heritage, and how the project may impact diverse population groups within these Indigenous Nations.
- There are 10 registered archaeological sites located near (within 2 km) the project. These sites were fully investigated and only two sites confirmed to have ongoing or moderate cultural heritage value or interest by the archaeologists. The sites have not been fenced in order to allow for ongoing First Nation use, but have been designed as no work zone areas. These sites are not expected to be altered by the proposed Upper Beaver Gold project development.
- Agnico Eagle acknowledges that there are sites for which studies have not shown having cultural heritage value or interest by following Ministry of Heritage, Sport, Tourism and Cultures Industries Standards and Guidelines, but which could still have spiritual, sentimental, and traditional value and interest for Indigenous Nations in the area of the project. Some sites could be potentially altered by the proposed project.
- The Upper Beaver Gold project may result in effects to Indigenous Peoples, treaty rights and historic and current land and resource uses. This may include potential changes to land access, loss of traditional lands and ability to hunt, fish, gather and/or trap as well as the ability to practice their culture.



**Table S.6: Preliminary List of Changes to the Environment under Federal Authority**

<b>Environmental Component</b>	<b>Project Phase</b>	<b>Potential Source of Effect</b>	<b>Potential Change to the Environment</b>	<b>Preliminary Area of Influence</b>
Fish and fish habitat, as defined in subsection 2(1) of the <i>Fisheries Act</i>	Construction	<ul style="list-style-type: none"> <li>- Diversion of waterbodies / watercourses</li> <li>- Installation of temporary and permanent infrastructure</li> </ul>	<ul style="list-style-type: none"> <li>- Alteration, disruption and destruction of fish and benthic fauna habitat from direct disturbance, blasting and mine dewatering</li> <li>- Change to the natural surface water flow pattern</li> <li>- Surface water quality alteration (meeting regulatory requirements, but not at background levels at discharge location)</li> </ul>	<ul style="list-style-type: none"> <li>- Project footprint</li> <li>- Project footprint</li> <li>- Project footprint and a short mixing zone downstream of the discharge location in the Misema River</li> </ul>
	Operations	<ul style="list-style-type: none"> <li>- Water management and treatment</li> </ul>	<ul style="list-style-type: none"> <li>- Surface water quality alteration (meeting regulatory requirements, but not at background levels at discharge location)</li> </ul>	<ul style="list-style-type: none"> <li>- Project footprint and a short mixing zone downstream of the discharge location in the Misema River</li> </ul>
	Closure	<ul style="list-style-type: none"> <li>- Site reclamation and closure</li> </ul>	<ul style="list-style-type: none"> <li>- Surface water quality alteration until discharge ends and site is reclaimed</li> <li>- Potential for creation of fish habitat in new pit lake, expected to be re-connected to the Misema River system</li> </ul>	<ul style="list-style-type: none"> <li>- Project footprint and a short mixing zone downstream of the discharge location in the Misema River</li> <li>- Project footprint</li> </ul>



<b>Environmental Component</b>	<b>Project Phase</b>	<b>Potential Source of Effect</b>	<b>Potential Change to the Environment</b>	<b>Preliminary Area of Influence</b>
Migratory birds, as defined in subsection 2(1) of the <i>Migratory Birds Convention Act, 1994</i>	Construction	<ul style="list-style-type: none"> <li>- Clearing of habitat to allow for site construction</li> <li>- Installation of permanent facilities</li> <li>- Additional vehicle traffic</li> </ul>	<ul style="list-style-type: none"> <li>- Habitat loss</li> <li>- Disturbance of species</li> <li>- Increased risk of collision or mortality</li> </ul>	<ul style="list-style-type: none"> <li>- Project footprint</li> <li>- Potential limited area outside the footprint related to noise disturbance</li> <li>- Primarily related to local roads</li> </ul>
	Operations	<ul style="list-style-type: none"> <li>- Operation of permanent facilities</li> <li>- Additional vehicle traffic</li> </ul>	<ul style="list-style-type: none"> <li>- Disturbance of species</li> <li>- Increased risk of collision or mortality</li> </ul>	<ul style="list-style-type: none"> <li>- Potential limited area outside the footprint related to noise disturbance</li> <li>- Primarily related to local roads</li> </ul>
	Closure	<ul style="list-style-type: none"> <li>- Site reclamation and closure</li> </ul>	<ul style="list-style-type: none"> <li>- Habitat redevelopment</li> </ul>	<ul style="list-style-type: none"> <li>- Project footprint</li> </ul>





- The Upper Beaver Gold project may have effects on diverse population groups which will be assessed in the Impact Statement. Potential effects may include: effects on Indigenous women, elders, youth, etc.; effects on Indigenous women's safety; and/or changes on community well-being and health of Indigenous Peoples.
- These potential effects will be investigated through the environmental approvals process for the mine and ongoing engagement activities.
- Agnico Eagle believes that there will be positive economic effects as a result of the Upper Beaver Gold project, including employment and business opportunities (for individuals, as well as Indigenous communities).

#### **F.4 Estimate of Greenhouse Gas Emissions**

As with virtually all industrial operations, greenhouse gases will be emitted during all phases of the project (construction, operation and closure). The primary sources of greenhouse gas emissions from each project phase are expected to be:

- Construction: diesel combustion in mobile equipment;
- Operation: diesel combustion in mobile equipment, blasting in the open pit and underground, processing of ore and indirect emissions from purchased grid power;
- Closure: diesel combustion in mobile equipment.

Direct emissions (Scope 1) have been estimated at 21.5 kilotonne-CO<sub>2</sub>Eq/year. Indirect emissions (Scope 2 and off-site transport) for the Upper Beaver Gold project have been estimated at 9.6 kilotonne-CO<sub>2</sub>Eq/year utilizing the guidance developed by Environment and Climate Change Canada.

#### **F.5 Wastes and Emissions**

Table S.7 provides a brief summary of the types of wastes and emissions that are likely to be generated from the Upper Beaver Gold project, in the air, in or on water, and in or on land, during the construction, operation, closure phase of the project.

#### **F.6 Overview of Potential Environmental Effects**

Table S.8 provides a summary of the potential environmental effects of the Upper Beaver Gold project. This information will be clarified through ongoing engagement activities, the environmental approvals process, and engineering investigations and studies for the mine. Table S.9 provides an overview of comments received to date and a proposed preliminary approach to address these aspects, including in the site design as appropriate.

The *Impact Assessment Act* requires that potential cumulative effects also be considered. Cumulative effects will be assessed in the Impact Statement in accordance with Impact Assessment Agency of Canada guidance. For the Upper Beaver Gold project, it is anticipated this would include cumulative effects associated with the exploration program and advanced exploration program at the site. Agnico Eagle is purposefully developing the Upper Beaver Gold project (the mine), to expand and/or modify facilities that are being developed during the advanced exploration program in order to minimize environmental disturbance as practical.



**Table S.7: Preliminary Listing of Types of Wastes or Emissions**

<b>Environmental Component</b>	<b>Project Phase</b>	<b>Anticipated Waste or Emission</b>	<b>Primary Project Sources</b>
In the air	Construction, Operations and Closure	<ul style="list-style-type: none"> <li>- Dust emissions</li> <li>- Air emissions including greenhouse gas emissions from machinery and equipment</li> <li>- Noise emissions</li> <li>- Light</li> </ul>	<ul style="list-style-type: none"> <li>- Blasting, crushers, conveyors, tailings storage facility, stockpiles, roads and laydown areas</li> <li>- Processing plant, mobile equipment</li> <li>- Open pit blasting, crusher, stockpiling activities</li> <li>- Site illumination for safety</li> </ul>
In or on land	Construction	<ul style="list-style-type: none"> <li>- Domestic solid waste</li> <li>- Regulated and non-regulated, industrial solid and liquid waste</li> <li>- Mineral waste (overburden and mine rock)</li> <li>- Vibration</li> </ul>	<ul style="list-style-type: none"> <li>- Processing plant, maintenance, office</li> <li>- Processing plant, maintenance, office</li> <li>- Open pit and underground mine</li> </ul>
	Operations	<ul style="list-style-type: none"> <li>- Domestic solid waste</li> <li>- Regulated and non-regulated, industrial solid and liquid waste</li> <li>- Mineral waste (overburden, mine rock and tailings)</li> <li>- Vibration</li> </ul>	<ul style="list-style-type: none"> <li>- Processing plant, maintenance, office</li> <li>- Processing plant, maintenance, office</li> <li>- Open pit and underground mine</li> </ul>
	Closure	<ul style="list-style-type: none"> <li>- Domestic solid waste</li> <li>- Regulated and non-regulated, industrial solid and liquid waste</li> </ul>	<ul style="list-style-type: none"> <li>- Processing plant, maintenance, office</li> <li>- Demolition activities, maintenance, office</li> </ul>
In or on water	Construction	<ul style="list-style-type: none"> <li>- Treated contact runoff discharged to the Misema River as effluent</li> <li>- Treated domestic sewage</li> <li>- Vibration</li> </ul>	<ul style="list-style-type: none"> <li>- Project site (captured in water management infrastructure and treated in ponds and water treatment plant)</li> <li>- Sewage treatment plant</li> <li>- Explosive use (open pit)</li> </ul>
	Operations	<ul style="list-style-type: none"> <li>- Treated contact runoff and effluent discharged to the Misema River</li> <li>- Treated domestic sewage</li> <li>- Vibration</li> </ul>	<ul style="list-style-type: none"> <li>- Project site (captured in water management infrastructure and treated in ponds and water treatment plant)</li> <li>- Sewage treatment plant</li> <li>- Explosive use (open pit)</li> </ul>



<b>Environmental Component</b>	<b>Project Phase</b>	<b>Anticipated Waste or Emission</b>	<b>Primary Project Sources</b>
	Closure	<ul style="list-style-type: none"> <li>- Treated contact runoff and effluent discharged to the Misema River</li> <li>- Treated domestic sewage</li> </ul>	<ul style="list-style-type: none"> <li>- Project site (captured in water management infrastructure and treated in ponds and water treatment plant)</li> <li>- Sewage treatment plant</li> </ul>





**Table S.8: Preliminary Summary of Potential Environmental Effects**

<b>Environmental Component</b>	<b>Potential Effect (Preliminary)</b>	<b>Proposed Mitigation (Preliminary)</b>
Air Quality, Greenhouse Gases, Noise and Light	<ul style="list-style-type: none"> <li>- Air emissions have the potential to generate dust or products of petroleum hydrocarbon combustion</li> <li>- Noise emissions from the project have the potential to disturb other area users</li> <li>- Greenhouse gas emissions from project have a minor potential to contribute to global carbon dioxide emissions</li> <li>- Operation of an industrial facility will cause a localized light glow that is visible off site</li> <li>- Impacts on how and where Indigenous Nations Rights are exercised</li> </ul> <p>Preliminary Areal Extent:</p> <ul style="list-style-type: none"> <li>- Air quality regulatory requirements will be met at property boundary</li> <li>- Noise regulatory requirements will be met at nearest receptor (cottage)</li> <li>- A night glow is expected to be visible off site</li> </ul>	<ul style="list-style-type: none"> <li>- Provincial regulatory requirements will be met for on-site emissions and air quality at the property boundary</li> <li>- Provincial regulatory criteria will be met for on-site emissions and at surrounding noise sensitive locations, such as cottages</li> <li>- Appropriate management practices / plans will be developed and implemented</li> <li>- Water sprays will be used to control dust emissions from haul roads and construction areas, and best management practices will be followed for dust control during operations</li> <li>- Measures will be used to reduce sound emission effects, such as: developing a compact site, maintaining tree screens around work areas, reducing the overall height of stockpiles, maintaining equipment in good working order and utilizing efficient mufflers</li> <li>- Development of a compact overall site, as proposed, will reduce haulage / transportation distances for greater fuel economy and reduce greenhouse gas emissions</li> <li>- Maintaining equipment and vehicles in good working order also improves on fuel combustion efficiency</li> <li>- Care will be taken to ensure lights are properly aimed to minimize off-site light disturbance</li> </ul>
Local Waterbodies / Watercourses	<ul style="list-style-type: none"> <li>- Project development may overprint small creeks and beaver ponds, and have the potential to reduce downstream flow in the immediate vicinity, but flow is returned to the same watershed elsewhere</li> <li>- A portion of the local surface water system will require dewatering (York Lake) and diversion (Misema River) in order to safely mine the underground resources, which will result in a disruption to fish habitat</li> </ul>	<ul style="list-style-type: none"> <li>- Effluent discharge to the environment will meet all federal and provincial regulatory requirements</li> <li>- In-water structures will be designed to avoid interference with navigation as reasonable</li> <li>- Establishment of an open pit will support the removal of historic mine rock and tailings that are currently within or adjacent to the Misema River system</li> <li>- Preliminary plan is to re-connect the water re-filled open pit (pit lake) to the Misema River system on closure, which will increase the overall lake size for future uses</li> </ul>



<b>Environmental Component</b>	<b>Potential Effect (Preliminary)</b>	<b>Proposed Mitigation (Preliminary)</b>
	<ul style="list-style-type: none"> <li>- An intake / discharge location is proposed (to be determined), which has the potential for habitat disturbance and to affect water quality and flows</li> <li>- Three or more new crossings at locations to be determined may be needed, which has the potential for habitat disturbance</li> <li>- Impacts on how and where Indigenous Nations Rights are exercised</li> </ul> <p>Preliminary Areal Extent:</p> <ul style="list-style-type: none"> <li>- Effluent quality will meet regulatory requirements before release to environment</li> <li>- There may be a small area downstream of the discharge location (mixing zone) where water quality may not be the same as the background water quality</li> </ul>	
Groundwater System	<ul style="list-style-type: none"> <li>- Open pit and potentially underground mine dewatering will affect the local groundwater levels and may affect surface water flows, although not expected to be material based on historical information</li> <li>- Groundwater quality is not expected to be affected</li> </ul> <p>Preliminary Areal Extent:</p> <ul style="list-style-type: none"> <li>- Dewatering may result in a depression in the local groundwater level, but based on historical information, it is anticipated to be narrow and primarily limited to the project footprint</li> </ul>	<ul style="list-style-type: none"> <li>- Modelling investigations will fully assess potential effects to support mitigation, if needed</li> <li>- Groundwater levels will return after the mine workings, including the open pit, flood at closure</li> </ul>



<b>Environmental Component</b>	<b>Potential Effect (Preliminary)</b>	<b>Proposed Mitigation (Preliminary)</b>
Fish and Fish Habitat	<ul style="list-style-type: none"> <li>- Project development may overprint small creeks and ponds which are fish frequented;</li> <li>- Project footprint and dewatering has the potential to impact water levels downstream flow volumes in the immediate vicinity, but flow is returned to the same watershed elsewhere</li> <li>- A portion of the local surface water system will require diversion (Misema River) to isolate York Lake which will be removed (destroyed) by the open pit in order to safely mine the underground resources.</li> <li>- Effects of blasting (Vibration and overpressure) may kill or disrupt aquatic species</li> <li>- An intake / discharge location is proposed (to be determined), which has the potential for habitat disturbance</li> <li>- Three or more new water crossings at locations to be determined may be needed, which has the potential for habitat disturbance</li> </ul> <p>Preliminary Areal Extent:</p> <ul style="list-style-type: none"> <li>- Habitat disturbance will be limited to project footprint</li> <li>- Effluent quality will meet regulatory requirements before release to environment and will be protective of aquatic life</li> </ul>	<ul style="list-style-type: none"> <li>- Effluent discharge to the environment will meet all federal and provincial regulatory requirements</li> <li>- In-water structures will be designed to avoid interference with navigation as reasonable</li> <li>- Compensatory aquatic habitat, which will be consulted upon and approved through a rigorous federal process, will be provided to mitigate effects to aquatic resources, including habitat loss</li> <li>- Establishment of an open pit will support the removal of historic mine rock and tailings that are currently within or adjacent to the Misema River system</li> <li>- Preliminary plan is to re-connect the water re-filled open pit (pit lake) to the Misema River system on closure, which may include establishment of fish habitat</li> <li>- Best management practices, measures to protect fish and fish habitat; and standards and code of practices will be implemented where reasonable.</li> </ul>





<b>Environmental Component</b>	<b>Potential Effect (Preliminary)</b>	<b>Proposed Mitigation (Preliminary)</b>
Natural Vegetation and Wildlife	<ul style="list-style-type: none"> <li>- Wildlife (and including Moose and other furbearers) may be disturbed by site activities and disturbance, including noise</li> <li>- Mine site and related infrastructure development, if any, will displace existing terrestrial habitat</li> <li>- Mine site development may displace existing terrestrial habitat for Species at Risk</li> <li>- Impacts on how and where Indigenous Nations Rights are exercised</li> </ul> <p>Preliminary Areal Extent:</p> <ul style="list-style-type: none"> <li>- Habitat disturbance will be limited to project footprint</li> <li>- Potential limited area outside the footprint related to noise disturbance</li> <li>- Increase potential for wildlife collision primarily on local roads</li> </ul>	<ul style="list-style-type: none"> <li>- The majority of the site has been previously disturbed through past forestry, exploration or mining activities, or will be disturbed by the proposed advanced exploration program, but some areas to be affected remain a more natural condition</li> <li>- A compact site for the new mine will be developed to limit disturbance to new areas as reasonable</li> <li>- Tree clearing will be avoided during the bird nesting season</li> <li>- The site will be reclaimed after mining ends to support future productive habitat</li> </ul>
Hunting, Trapping, Fishing and Tourism	<ul style="list-style-type: none"> <li>- Limited effect as the mine is to be located on an active advanced exploration program site on private property, where access is controlled / restricted for safety of workers.</li> <li>- There will be a more extensive disruption to the local experience in the immediate vicinity of the site from the larger scale mining operation</li> </ul> <p>Preliminary Areal Extent:</p> <ul style="list-style-type: none"> <li>- Potential limited area outside the footprint related to noise disturbance, including Ava Lake and a portion of Beaverhouse Lake</li> </ul>	<ul style="list-style-type: none"> <li>- Agnico Eagle intends to continue work with its neighbours to mitigate potential localized effects during operation</li> <li>- Hunting will continue to be restricted on the project site in order to ensure the safety of workers and others</li> <li>- On closure, the disruption will cease and the existing hazards in York Lake (tailings and mine rock) will be removed, which will enhance the area in the future</li> <li>- The preliminary plan is to connect the pit lake from the flooding of the open pit to the Misema River system on closure, which will increase the overall lake size for future uses</li> </ul>



<b>Environmental Component</b>	<b>Potential Effect (Preliminary)</b>	<b>Proposed Mitigation (Preliminary)</b>
Commercial Operations	<ul style="list-style-type: none"> <li>- Could limit access to people and resources for other operations and potentially draw local people back to the area for jobs</li> </ul> <p>Preliminary Areal Extent:</p> <ul style="list-style-type: none"> <li>- To be determined</li> </ul>	<ul style="list-style-type: none"> <li>- No mitigation measures are proposed, other than to optimize economic benefits to the local and regional economies, including to local Indigenous Nations as reasonable</li> </ul>
Traditional use of lands and resources	<ul style="list-style-type: none"> <li>- Effects on spiritual relationships and connection with the environment</li> <li>- Effects on locations of sentimental, traditional and heritage value</li> <li>- Effects on traditional use of lands and resources as sites of value and interest to First Nation(s)</li> <li>- Effects on cultural practices</li> <li>- Changes to land and resources resulting in effects on exercising rights</li> </ul> <p>Preliminary Areal Extent:</p> <ul style="list-style-type: none"> <li>- Potential limited area outside the mine-held lands related to noise disturbance</li> </ul>	<ul style="list-style-type: none"> <li>- Ongoing engagement with Indigenous Nations to mitigate potential effects</li> </ul>
Indigenous / Public Health and Safety	<ul style="list-style-type: none"> <li>- All regulatory requirements (such as for air quality, noise, water quality and similar) will be met</li> <li>- Effects on Indigenous women's safety</li> <li>- Effects on Indigenous women, youth, elders, etc.</li> <li>- Changes to community safety and well-being and health of Indigenous Peoples</li> <li>- Increased risk of vehicle collision due to increased traffic</li> </ul>	<ul style="list-style-type: none"> <li>- Agnico Eagle will work with local Indigenous Nations with an aim of helping ensure the project will provide a positive benefit</li> <li>- Traffic management and awareness will reduce potential for accidents on public roads</li> <li>- Potential to establish a road extension for local cottage traffic</li> </ul>



Environmental Component	Potential Effect (Preliminary)	Proposed Mitigation (Preliminary)
Socio-economics	<ul style="list-style-type: none"> <li>- Benefits including employment and procurement opportunities</li> <li>- Benefits for education and training opportunities</li> <li>- Effects on healthcare services and providers</li> <li>- Effects on traffic due to mine personnel commuting to site</li> </ul>	<ul style="list-style-type: none"> <li>- Agnico Eagle will work with local Indigenous Nations and with communities with an aim of helping ensure the project will provide a positive benefit</li> </ul>
Physical and Cultural Heritage	<ul style="list-style-type: none"> <li>- No anticipated effect to known archaeology sites</li> <li>- Effects to cultural heritage to be determined</li> </ul> <p>Preliminary Areal Extent:</p> <ul style="list-style-type: none"> <li>- Heritage disturbance will be limited to project footprint</li> </ul>	<ul style="list-style-type: none"> <li>- Archaeological studies have been conducted and no cultural heritage features or artefacts have been identified in locations of proposed development</li> <li>- This will continue to be reviewed as the project's designs and progress, including relation to the diversion of the Misema River, and mitigation will be completed, if needed</li> <li>- Measures will be put in place to identify any as yet undetected features or artefacts during construction</li> </ul>
Identified structures or sites *	<ul style="list-style-type: none"> <li>- No effect expected, pending determination of diversion routing / water levels</li> </ul>	<ul style="list-style-type: none"> <li>- None expected to be required, other than protection</li> </ul>

**Notes:**

\* Structures or sites of historical, archaeological, palaeontological or architectural significance.

This preliminary assessment of potential effects was developed in part through ongoing engagement activities, including through a review of a draft of the Initial Project Description by the BHFN, MFN and WFN.





**Table S.9: Preliminary Comments and Preliminary Approach / Actions**

<b>Preliminary Comments / Concern</b>	<b>Preliminary Approach to Address / Actions</b>
<ul style="list-style-type: none"> <li>- Will access be retained to Beaverhouse Lake?</li> <li>- How will the spawning beds closure to the boat launch at Beaverhouse Lake be affected?</li> </ul>	<ul style="list-style-type: none"> <li>- Agnico Eagle will ensure that access is retained to Beaverhouse Lake. The current plan is to establish a new, improved access route that will avoid the mine site.</li> <li>- There will be no direct effect on the spawning beds. Water levels in Beaverhouse Lake are proposed to be retained at current levels. Any potential indirect effects to Beaverhouse Lake will be fully assessed through the environmental regulatory process.</li> </ul>
<ul style="list-style-type: none"> <li>- Will Indigenous Knowledge be considered, such as location of medicinal plants, harvestable plants and wildlife?</li> </ul>	<ul style="list-style-type: none"> <li>- Agnico Eagle hopes to be able to work with local Indigenous Nations to help document this information so that it can be used in assessing potential effects from the Upper Beaver Mine and developing appropriate mitigation strategies.</li> </ul>
<ul style="list-style-type: none"> <li>- Will local community members be able to be involved in the planning and approvals process?</li> </ul>	<ul style="list-style-type: none"> <li>- There is a rigorous approvals process to develop any new mine in Ontario. As part of that process, there are required periods when individual community members can comment. Agnico Eagle will respond to all comments received through this process, but also continue its ongoing process of consultation and engagement with Indigenous Nations, local cottagers and other stakeholders.</li> </ul>
<ul style="list-style-type: none"> <li>- York Lake is connected to a series of lakes. What will the effect be of draining the lake on the lake system?</li> </ul>	<ul style="list-style-type: none"> <li>- The potential effects on the Misema River system will be fully assessed through the regulatory process.</li> <li>- Agnico Eagle intends to maintain the lake levels in the other lakes by creating a diversion around York Lake before it is dewatered.</li> <li>- Because parts of York Lake were infilled historically with mine tailings and rock, the habitat in the lake is not the same as natural lakes. As part of the regulatory process, Agnico Eagle will need to develop a strategy to provide compensation for this loss of habitat.</li> <li>- Fish present in the lake will be removed, as reasonable, prior to completion of the dewatering of York Lake, and will be transferred to another reasonable location nearby in discussion with the approval of the regulatory authorities expected to be required.</li> </ul>
<ul style="list-style-type: none"> <li>- How big is the open pit? Will draining the lake help solve the problem of containing water from your underground workings?</li> </ul>	<ul style="list-style-type: none"> <li>- The open pit is relatively small compared to some other open mines as it is part of what is primarily an underground mine operation.</li> <li>-</li> <li>- Agnico Eagle will contract specialists to help assess the groundwater aspects of the underground mine to ensure both the safety of the workers, as well as being able to accurately assess potential environmental effects to the surrounding area prior to the development occurring.</li> </ul>



<b>Preliminary Comments / Concern</b>	<b>Preliminary Approach to Address / Actions</b>
<ul style="list-style-type: none"> <li>- Dust, noise and traffic impacts (such as speed) are of concern</li> <li>- Dust emission, noise, vibration, light pollution and visual impact during operation</li> <li>- Quality of life for cottagers</li> </ul>	<ul style="list-style-type: none"> <li>- Although this is a historic mining location and an area with a number of mines, Agnico Eagle acknowledges that development of a new mine will change the site, including after the mine is closed and reclaimed. Agnico Eagle believes the site will be improved, including the removal of historic safety hazards and mine wastes (mine rock and tailings in/at York Lake).</li> <li>- Agnico Eagle believes that through proper mitigation, many of the local concerns will be alleviated. These measures will be fully defined through the regulatory process but expected to include (but are not limited to).</li> <li>- Effective controls on dust (stockpiles design, retaining vegetation, use of water sprays).</li> <li>- Selecting quieter machine options (such as power supply), when reasonable.</li> <li>- Keeping equipment well maintained.</li> <li>- Where practical, locating facilities to minimize off-site effects.</li> <li>- Proper road maintenance and imposing speed limits on any roads under Agnico Eagle's control.</li> <li>- Aiming lights purposefully where needed for safety.</li> <li>- Agnico Eagle will monitor the potential effects determined through the studies during construction and operation and will apply additional mitigation measures if needed to reduce impacts.</li> </ul>
<ul style="list-style-type: none"> <li>- How will the site be cleaned up at closure?</li> </ul>	<ul style="list-style-type: none"> <li>- During the mine construction and operation, Agnico Eagle will remediate the historic hazards within the mine footprint. As reasonable, progressive reclamation will also occur during the operation phase for the effects of the mine, but most of the reclamation will occur after the mine closes.</li> <li>- A preliminary plan to reclaim the site will be included and provided for comment during the impact assessment process. In addition, a detailed regulatory Closure Plan will be required before any construction starts for the mine. As part of that process, Agnico Eagle will be required, before mining starts, to provide the provincial government with financial assurance (such as a bond) for the full amount to close the mine to ensure the public is protected.</li> </ul>
<ul style="list-style-type: none"> <li>- Will there be contracting and jobs available?</li> </ul>	<ul style="list-style-type: none"> <li>- Agnico Eagle will set up a process to ensure that local communities are aware of potential opportunities. Although some of the contracts and jobs will be very specialized and may not be able to be filled locally, Agnico Eagle would like to ensure that local people also get benefits from the mine.</li> </ul>



## **APPENDIX A**

### **COMMUNITY INPUT AND OUTCOMES - STAKEHOLDERS**





**APPENDIX A: COMMUNITY INPUT AND OUTCOMES – STAKEHOLDERS**

The information below presents the collected input as well as the outcomes of the engagement activities conducted by Agnico Eagle between September 2020 and September 2021. Responses provided and key issues have been distinguished by project phase, based on the information available to date. Distinction for potential impact per project components will be made within the Impact Statement study and engagement activities.

TOPICS	KEY ISSUES	NATURE OF INTERVENTION			MINING PHASE						RESULTS OF ENGAGEMENT
		QUESTION	SUGGESTION	CONCERN	EXPLORATION / ASSESSMENT	ADVANCED EXPLORATION	CONSTRUCTION	OPERATION	DECOMMISSIONING	ABANDONMENT	
<b>COTTAGERS AND PROPERTY OWNERS</b>											
<b>LAND SHARING AND USE</b>											
Quality of life	▶ Project’s potential impacts on the cottager’s quality of life			✓	✓	✓	✓	✓			<ul style="list-style-type: none"> <li>▶ Agnico Eagle informed stakeholders of the baseline studies planned in 2021.</li> <li>▶ Engagement activities planned in 2021 are validated with stakeholders and adjusted if deemed necessary.</li> <li>▶ Agnico Eagle also held workshop meetings with cottagers to work on a collaborative approach where mitigation measures would be discussed according to each phase of the project. This will be part of the proposed collaboration based on a Good Neighbouring approach if accepted by the cottagers and land owners.</li> </ul>



**APPENDIX A: COMMUNITY INPUT AND OUTCOMES – STAKEHOLDERS**

TOPICS	KEY ISSUES	NATURE OF INTERVENTION			MINING PHASE						RESULTS OF ENGAGEMENT
		QUESTION	SUGGESTION	CONCERN	EXPLORATION / ASSESSMENT	ADVANCED EXPLORATION	CONSTRUCTION	OPERATION	DECOMMISSIONING	ABANDONMENT	
Quality of life (cont'd)	<ul style="list-style-type: none"> <li>▶ Project layout and use of an open pit</li> </ul>										<ul style="list-style-type: none"> <li>▶ Discussions regarding the concerns of the project layout will take place at future meetings.</li> <li>▶ Agnico Eagle will provide more information on the rationale of the open pit.</li> </ul>
	<ul style="list-style-type: none"> <li>▶ Possibility to use existing aggregate sources to avoid affecting local land</li> </ul>	✓						✓			<ul style="list-style-type: none"> <li>▶ If potential of aggregate is confirmed south of the site, Agnico Eagle will assess all possible options and select the best one.</li> <li>▶ The proximity of the aggregates offers significant advantages in terms of costs and reduction of the amount of truck transportation.</li> </ul>
Emergency measures	<ul style="list-style-type: none"> <li>▶ Safety of cottagers from mining activities in case of emergency (e.g., fire)</li> </ul>			✓	✓	✓	✓	✓			<ul style="list-style-type: none"> <li>▶ Agnico Eagle follows regulations, including when there is a fire warning or ban.</li> <li>▶ There will be eventually a safety person on the Upper Beaver site.</li> </ul>
	<ul style="list-style-type: none"> <li>▶ Emergency alert system and evacuation protocol in case of emergency (e.g., fire)</li> </ul>		✓			✓	✓	✓			<ul style="list-style-type: none"> <li>▶ An emergency alert system will be developed when there are more workers on the site.</li> </ul>



**APPENDIX A: COMMUNITY INPUT AND OUTCOMES – STAKEHOLDERS**

TOPICS	KEY ISSUES	NATURE OF INTERVENTION			MINING PHASE						RESULTS OF ENGAGEMENT
		QUESTION	SUGGESTION	CONCERN	EXPLORATION / ASSESSMENT	ADVANCED EXPLORATION	CONSTRUCTION	OPERATION	DECOMMISSIONING	ABANDONMENT	
Potential property acquisition	<ul style="list-style-type: none"> <li>Share with Agnico Eagle’s shareholders one cottager’s suggestion to evaluate the possibility of buying surrounding properties out</li> </ul>		✓		✓	✓					<ul style="list-style-type: none"> <li>Agnico Eagle mentioned being open to analyze all suggestions and wish to reach a common agreement.</li> <li>A Good Neighbouring Approach has been suggested to cottagers to make the next steps more predictable and make sure solutions suit all parties.</li> <li>Agnico Eagle shared examples of Good Neighbouring Guide developed in collaboration with communities elsewhere to show its openness.</li> <li>Agnico Eagle presented guidelines for property acquisition.</li> </ul>
Landscape	<ul style="list-style-type: none"> <li>Visual aspect of infrastructure</li> </ul>			✓		✓	✓	✓			<ul style="list-style-type: none"> <li>Infrastructure will be kept as low as reasonable (by considering footprint).</li> <li>Vegetation buffers will be kept.</li> </ul>
Luminosity	<ul style="list-style-type: none"> <li>Seeing the light from the site at their cottage</li> </ul>			✓		✓	✓	✓			<ul style="list-style-type: none"> <li>Care will be taken to ensure lights are appropriately aimed to minimize off-site disturbance.</li> </ul>
<b>WILDLIFE</b>											
N/A	<ul style="list-style-type: none"> <li>N/A</li> </ul>										<ul style="list-style-type: none"> <li>N/A</li> </ul>
<b>FISH AND FISH HABITAT</b>											
N/A	<ul style="list-style-type: none"> <li>N/A</li> </ul>										<ul style="list-style-type: none"> <li>N/A</li> </ul>



**APPENDIX A: COMMUNITY INPUT AND OUTCOMES – STAKEHOLDERS**

TOPICS	KEY ISSUES	NATURE OF INTERVENTION			MINING PHASE						RESULTS OF ENGAGEMENT
		QUESTION	SUGGESTION	CONCERN	EXPLORATION / ASSESSMENT	ADVANCED EXPLORATION	CONSTRUCTION	OPERATION	DECOMMISSIONING	ABANDONMENT	
<b>COMMUNITY ENGAGEMENT</b>											
Engagement activities	<ul style="list-style-type: none"> <li>Maintaining contact as the Project progresses</li> </ul>			✓	✓	✓	✓	✓	✓		<ul style="list-style-type: none"> <li>Agnico Eagle is proposing and having frequent meetings with cottagers and land owners.</li> <li>Agnico Eagle also sends updates by email, shares Newsletters, provided a Q&amp;A Document, and developed a website dedicated to the project.</li> </ul>
	<ul style="list-style-type: none"> <li>Influence of stakeholder feedback on the project design</li> </ul>			✓							<ul style="list-style-type: none"> <li>Agnico Eagle is open to receiving suggestions for evaluation.</li> <li>Agnico Eagle is proposing to hold a workshop in the coming months to discuss different topics and get cottagers' input.</li> <li>Agnico Eagle encourages participating in the Impact Assessment Agency consultation.</li> </ul>
	<ul style="list-style-type: none"> <li>Lack of trust and information during the workshops of the Good Neighbour Approach</li> </ul>			✓		✓	✓	✓			<ul style="list-style-type: none"> <li>Agnico Eagle is open to continuing the collaboration on a Good Neighbouring Guide with cottagers to manage concerns.</li> </ul>





**APPENDIX A: COMMUNITY INPUT AND OUTCOMES – STAKEHOLDERS**

TOPICS	KEY ISSUES	NATURE OF INTERVENTION			MINING PHASE						RESULTS OF ENGAGEMENT
		QUESTION	SUGGESTION	CONCERN	EXPLORATION / ASSESSMENT	ADVANCED EXPLORATION	CONSTRUCTION	OPERATION	DECOMMISSIONING	ABANDONMENT	
<b>WATER MANAGEMENT</b>											
Water taking	<ul style="list-style-type: none"> <li>▶ Groundwater levels and quality with regards to future potential residential wells</li> <li>▶ Water taking from Ava Lake and potential impact on surface water</li> </ul>			✓		✓	✓	✓			<ul style="list-style-type: none"> <li>▶ Agnico Eagle will take this concern into consideration.</li> <li>▶ According to current hydrology information, the project should not affect water levels.</li> <li>▶ Necessary measures will be taken to ensure the dewatering plan meets regulatory approval.</li> </ul>
Water diversion	<ul style="list-style-type: none"> <li>▶ Dewatering of York Lake</li> </ul>			✓			✓	✓			<ul style="list-style-type: none"> <li>▶ Rationale about the necessity of dewatering and diversion was provided to cottagers and land owners.</li> <li>▶ The dewatering is required to ensure the safest and most sustainable development of the project.</li> <li>▶ It is required to manage risk associated with rock stability issues at surface related to historical mining, to ensure safety of our workers and maintain the viability of the project.</li> </ul>
Water quality	<ul style="list-style-type: none"> <li>▶ Contamination and regulatory requirement</li> </ul>			✓		✓	✓	✓			<ul style="list-style-type: none"> <li>▶ Agnico Eagle will have water treatment designed to reach very low concentrations and meet regulations.</li> </ul>



**APPENDIX A: COMMUNITY INPUT AND OUTCOMES – STAKEHOLDERS**

TOPICS	KEY ISSUES	NATURE OF INTERVENTION			MINING PHASE						RESULTS OF ENGAGEMENT
		QUESTION	SUGGESTION	CONCERN	EXPLORATION / ASSESSMENT	ADVANCED EXPLORATION	CONSTRUCTION	OPERATION	DECOMMISSIONING	ABANDONMENT	
Water quality (cont'd)	<ul style="list-style-type: none"> <li>▶ Toxicity concerns with regards to the tailings and water management</li> <li>▶ Levels of heavy metals at the site</li> </ul>										<ul style="list-style-type: none"> <li>▶ Effluent limits are calculated with the capacity of the receiver.</li> <li>▶ Agnico Eagle will continue testing for different metals at the Upper Beaver site to have a full understanding of the geology and to ensure proper management.</li> </ul>
Water effluent	<ul style="list-style-type: none"> <li>▶ Location of the discharge effluent</li> </ul>	✓				✓					<ul style="list-style-type: none"> <li>▶ Effluent discharge will be located downstream of the Beaverhouse Lake, and the cottagers' area, in the Misema River.</li> </ul>
<b>SOCIOECONOMIC IMPACTS</b>											
N/A	▶ N/A										▶ N/A
<b>NOISE AND VIBRATION</b>											
Noise	<ul style="list-style-type: none"> <li>▶ Noise caused by exploration activities</li> </ul>			✓	✓						<ul style="list-style-type: none"> <li>▶ Agnico Eagle developed an action plan for the summer of 2021.</li> <li>▶ Agnico Eagle presented the action plan to cottagers in spring 2021.</li> <li>▶ The plan has been implemented during summer 2021.</li> </ul>
	<ul style="list-style-type: none"> <li>▶ Use waste rock berm to reduce noise from Advanced Exploration</li> </ul>		✓			✓					<ul style="list-style-type: none"> <li>▶ Agnico Eagle considered this is a potential additional mitigation measure that could be implemented following evaluation.</li> </ul>



**APPENDIX A: COMMUNITY INPUT AND OUTCOMES – STAKEHOLDERS**

TOPICS	KEY ISSUES	NATURE OF INTERVENTION			MINING PHASE						RESULTS OF ENGAGEMENT
		QUESTION	SUGGESTION	CONCERN	EXPLORATION / ASSESSMENT	ADVANCED EXPLORATION	CONSTRUCTION	OPERATION	DECOMMISSIONING	ABANDONMENT	
Noise (cont'd)	<ul style="list-style-type: none"> <li>▶ Noise from the crushing activities, ventilation fans and others</li> <li>▶ Keep the crusher as far away from the residents as possible, to reduce the noise impacts</li> </ul>		✓	✓		✓	✓	✓			<ul style="list-style-type: none"> <li>▶ For Advanced Exploration, to reduce the potential noise levels, Agnico Eagle will install fans underground where reasonable and has designed the portal orientation to reduce noise to receivers.</li> <li>▶ Other measures are considered such as using broadband backup signals, scheduling work to limit surface activities during the evening period, having noise barriers, etc.</li> <li>▶ For the Upper Beaver Gold project, studies will be undertaken to assess the expected noise levels, after which we will develop the required measures to mitigate the noise impacts on the surrounding neighbourhood.</li> <li>▶ For example, the crusher is planned to be placed inside a building and to be oriented towards the west and not towards the cottages.</li> </ul>



**APPENDIX A: COMMUNITY INPUT AND OUTCOMES – STAKEHOLDERS**

TOPICS	KEY ISSUES	NATURE OF INTERVENTION			MINING PHASE						RESULTS OF ENGAGEMENT
		QUESTION	SUGGESTION	CONCERN	EXPLORATION / ASSESSMENT	ADVANCED EXPLORATION	CONSTRUCTION	OPERATION	DECOMMISSIONING	ABANDONMENT	
Noise (cont'd)	▶ Noise from the pit operation			✓			✓	✓	✓	✓	<ul style="list-style-type: none"> <li>▶ As Agnico Eagle is still assessing the various scenarios of the production, detailed studies for the Upper Beaver Gold project have not yet been completed.</li> <li>▶ Through Agnico Eagle’s extensive experience with underground and open-pit mining, best practices were developed to mitigate noise impacts.</li> </ul>
	▶ Noise monitoring activities	✓			✓	✓	✓	✓		✓	<ul style="list-style-type: none"> <li>▶ Everywhere Agnico Eagle operates, the goal is to not only meet, but exceed regulatory requirements for health, safety and environmental protection.</li> <li>▶ Agnico Eagle is committed to reducing noise from its activities, as much as possible, in addition to meeting regulatory requirements.</li> </ul>





**APPENDIX A: COMMUNITY INPUT AND OUTCOMES – STAKEHOLDERS**

TOPICS	KEY ISSUES	NATURE OF INTERVENTION			MINING PHASE						RESULTS OF ENGAGEMENT
		QUESTION	SUGGESTION	CONCERN	EXPLORATION / ASSESSMENT	ADVANCED EXPLORATION	CONSTRUCTION	OPERATION	DECOMMISSIONING	ABANDONMENT	
ROAD SHARING AND TRAFFIC											
Road safety	<ul style="list-style-type: none"> <li>Workers driving too fast on the road</li> </ul>			✓	✓	✓	✓	✓			<ul style="list-style-type: none"> <li>With the progress of the different development phases, Agnico Eagle will increase its presence on-site.</li> <li>Agnico Eagle is committed to increasing awareness with its employees and contractors.</li> <li>Agnico Eagle is committed to maintaining road conditions under their control and improve the road as the development of the project progresses.</li> <li>An official complaint management mechanism was implemented.</li> <li>Speed radar and limit signs have also been installed.</li> </ul>
	<ul style="list-style-type: none"> <li>Having bus transportation for the employees</li> </ul>		✓			✓	✓	✓			<ul style="list-style-type: none"> <li>Agnico Eagle will evaluate this option.</li> </ul>
Road condition	<ul style="list-style-type: none"> <li>Condition of the road that is shared</li> </ul>			✓	✓	✓	✓	✓			<ul style="list-style-type: none"> <li>Agnico Eagle is committed to maintaining road conditions under their control and improving the road as the development of the project progresses.</li> </ul>



**APPENDIX A: COMMUNITY INPUT AND OUTCOMES – STAKEHOLDERS**

TOPICS	KEY ISSUES	NATURE OF INTERVENTION			MINING PHASE						RESULTS OF ENGAGEMENT
		QUESTION	SUGGESTION	CONCERN	EXPLORATION / ASSESSMENT	ADVANCED EXPLORATION	CONSTRUCTION	OPERATION	DECOMMISSIONING	ABANDONMENT	
Accessibility of the road	<ul style="list-style-type: none"> <li>Maintaining the accessibility to their cottages by the boat launch</li> </ul>			✓		✓	✓	✓			<ul style="list-style-type: none"> <li>Agnico Eagle will maintain access to the lake to land users.</li> <li>For Advanced Exploration, the same access will remain accessible.</li> <li>For the Production Phase, a portion of the road may be relocated.</li> <li>Alternatives will be discussed with different land users.</li> </ul>
	<ul style="list-style-type: none"> <li>Using trail on Agnico Eagle’s land instead of boat launch</li> </ul>	✓				✓	✓	✓			<ul style="list-style-type: none"> <li>Agnico Eagle cannot guarantee to keep the existing access in the future, as it is located on the project site, but have no objection that cottagers using it until an alternative is available, unless unexpected safety considerations arise.</li> <li>Agnico Eagle will do his best to maintain access there.</li> </ul>
Access to Beaverhouse Lake	<ul style="list-style-type: none"> <li>Keeping the access to the lake (with the boat launch)</li> </ul>			✓		✓	✓	✓			<ul style="list-style-type: none"> <li>Agnico Eagle will maintain access to Beaverhouse Lake.</li> </ul>



**APPENDIX A: COMMUNITY INPUT AND OUTCOMES – STAKEHOLDERS**

TOPICS	KEY ISSUES	NATURE OF INTERVENTION			MINING PHASE						RESULTS OF ENGAGEMENT
		QUESTION	SUGGESTION	CONCERN	EXPLORATION / ASSESSMENT	ADVANCED EXPLORATION	CONSTRUCTION	OPERATION	DECOMMISSIONING	ABANDONMENT	
Access to Beaverhouse Lake (cont'd)	<ul style="list-style-type: none"> <li>▶ Having a new boat launch</li> <li>▶ Not having a new boat launch to avoid increasing the number of users of the lake</li> </ul>		✓				✓	✓			<ul style="list-style-type: none"> <li>▶ Agnico Eagle will hold a workshop with cottagers, land owners and other users of the boat launch to gather suggestions that would meet the needs of most users.</li> </ul>
	<ul style="list-style-type: none"> <li>▶ Having a new access road from Fork Lake Road</li> </ul>		✓				✓	✓			<ul style="list-style-type: none"> <li>▶ Agnico Eagle will assess the suggestions to confirm their feasibility.</li> </ul>
<b>AIR QUALITY AND DUST</b>											
Dust management	<ul style="list-style-type: none"> <li>▶ Dust generated by a potential crusher on-site</li> </ul>			✓			✓	✓			<ul style="list-style-type: none"> <li>▶ Impact Statement will be done to confirm the potential impacts.</li> <li>▶ Agnico Eagle is committed to mitigating impacts for the community.</li> <li>▶ Agnico Eagle will meet the regulatory standards.</li> </ul>
<b>CLOSURE PLAN AND LAND REHABILITATION</b>											
N/A	<ul style="list-style-type: none"> <li>▶ N/A</li> </ul>										<ul style="list-style-type: none"> <li>▶ N/A</li> </ul>



**APPENDIX A: COMMUNITY INPUT AND OUTCOMES – STAKEHOLDERS**

TOPICS	KEY ISSUES	NATURE OF INTERVENTION			MINING PHASE						RESULTS OF ENGAGEMENT
		QUESTION	SUGGESTION	CONCERN	EXPLORATION / ASSESSMENT	ADVANCED EXPLORATION	CONSTRUCTION	OPERATION	DECOMMISSIONING	ABANDONMENT	
<b>MUNICIPALITIES REPRESENTATIVES CLOSE TO PROJECT</b>											
<b>LAND SHARING AND USE</b>											
N/A	▶ N/A										▶ N/A
<b>WILDLIFE</b>											
N/A	▶ N/A										▶ N/A
<b>FISH AND FISH HABITAT</b>											
Fish population	▶ Fish restocking once the project is completed		✓							✓	▶ Agnico Eagle will first have to complete the Impact Statement but is open to considering the suggestion.
<b>COMMUNITY ENGAGEMENT</b>											
Engagement activities with citizens	▶ Concern with how Agnico Eagle will reach out to citizens considering the pandemic situation	✓			✓						▶ Agnico Eagle will communicate with municipalities to identify best ways to reach out to citizens considering the pandemic situation.





**APPENDIX A: COMMUNITY INPUT AND OUTCOMES – STAKEHOLDERS**

TOPICS	KEY ISSUES	NATURE OF INTERVENTION			MINING PHASE						RESULTS OF ENGAGEMENT
		QUESTION	SUGGESTION	CONCERN	EXPLORATION / ASSESSMENT	ADVANCED EXPLORATION	CONSTRUCTION	OPERATION	DECOMMISSIONING	ABANDONMENT	
<b>WATER MANAGEMENT</b>											
Flooding issues	<ul style="list-style-type: none"> <li>▶ Water management and consideration of spring flooding around the Misema River</li> </ul>			✓		✓	✓	✓			<ul style="list-style-type: none"> <li>▶ Agnico Eagle confirmed to participants that the diverting of the water will be taken into consideration of the natural hydrologic conditions.</li> <li>▶ As is within Agnico Eagle’s control, the water level will be maintained within the range of natural variation.</li> <li>▶ Agnico Eagle has mentioned being open to meeting with the citizens living near the Misema River to discuss the historic water fluctuation on the Misema River.</li> </ul>
	<ul style="list-style-type: none"> <li>▶ Include the absence of vegetation around the Misema River when calculations of water flow will be conducted and share the results</li> </ul>		✓				✓	✓			<ul style="list-style-type: none"> <li>▶ Agnico Eagle confirmed to participants that the absence of vegetation will be considered.</li> <li>▶ Agnico Eagle will present the results of the studies once they are done.</li> </ul>



**APPENDIX A: COMMUNITY INPUT AND OUTCOMES – STAKEHOLDERS**

TOPICS	KEY ISSUES	NATURE OF INTERVENTION			MINING PHASE						RESULTS OF ENGAGEMENT
		QUESTION	SUGGESTION	CONCERN	EXPLORATION / ASSESSMENT	ADVANCED EXPLORATION	CONSTRUCTION	OPERATION	DECOMMISSIONING	ABANDONMENT	
Water quality	<ul style="list-style-type: none"> <li>Water quality of the Misema River for protection of other water uses: fishing, farms, municipality intake, etc.</li> </ul>	✓				✓	✓	✓	✓	✓	<ul style="list-style-type: none"> <li>All water discharged from the site will be treated as needed to ensure all applicable regulatory requirements are met.</li> <li>There will be water treatment plants for domestic sewage water, and for industrial sewage.</li> <li>These plants are designed to meet the effluent limits that are calculated based on the capacity of the receiver.</li> </ul>
<b>SOCIOECONOMIC IMPACTS</b>											
Socioeconomic impacts	<ul style="list-style-type: none"> <li>The number of employees currently working on the Upper Beaver project</li> </ul>	✓			✓						<ul style="list-style-type: none"> <li>As of October 2021, there are 27 Agnico Eagle employees working at the exploration office in Dobie and around 90 people from contractors working on the Kirkland Lake Property.</li> </ul>
	<ul style="list-style-type: none"> <li>Maximization of job creation, local partnerships, and training for local workers</li> </ul>			✓	✓	✓	✓	✓			<ul style="list-style-type: none"> <li>Agnico Eagle is commitment to maximizing positive outcomes for local communities as reasonable.</li> </ul>



**APPENDIX A: COMMUNITY INPUT AND OUTCOMES – STAKEHOLDERS**

TOPICS	KEY ISSUES	NATURE OF INTERVENTION			MINING PHASE						RESULTS OF ENGAGEMENT
		QUESTION	SUGGESTION	CONCERN	EXPLORATION / ASSESSMENT	ADVANCED EXPLORATION	CONSTRUCTION	OPERATION	DECOMMISSIONING	ABANDONMENT	
Socioeconomic impacts (cont'd)	<ul style="list-style-type: none"> <li>▶ Importance of sharing Agnico Eagle’s project positive economic impacts in the area, including for local business, contractors and workers</li> </ul>		✓		✓	✓	✓	✓			<ul style="list-style-type: none"> <li>▶ Agnico Eagle agrees on the importance of sharing those messages with the community.</li> <li>▶ The project’s website is useful to do so.</li> </ul>
	<ul style="list-style-type: none"> <li>▶ Topics like assumption of environmental legacies, job creation, local partnerships and skills development for local workers are also interesting aspects of the project that should be shared with the community</li> </ul>		✓		✓	✓	✓	✓			<ul style="list-style-type: none"> <li>▶ Agnico Eagle confirms having a long-term vision for the project.</li> <li>▶ Agnico Eagle is committed to responsible and sustainable development.</li> <li>▶ Agnico Eagle is committed to implementing the environmental, social and governance practices of high international standards to which Agnico Eagle is a signatory.</li> </ul>
<b>NOISE AND VIBRATION</b>											
N/A	▶ N/A										▶ N/A



**APPENDIX A: COMMUNITY INPUT AND OUTCOMES – STAKEHOLDERS**

TOPICS	KEY ISSUES	NATURE OF INTERVENTION			MINING PHASE						RESULTS OF ENGAGEMENT
		QUESTION	SUGGESTION	CONCERN	EXPLORATION / ASSESSMENT	ADVANCED EXPLORATION	CONSTRUCTION	OPERATION	DECOMMISSIONING	ABANDONMENT	
<b>ROAD SHARING AND TRAFFIC</b>											
Road access	<ul style="list-style-type: none"> <li>Interest in knowing if Agnico Eagle will adapt the existing Dobie Road or build a new one to access the mining site</li> </ul>	✓					✓	✓			<ul style="list-style-type: none"> <li>There is no plan to modify or upgrade the Dobie Road as it is not planned to be used for the project.</li> <li>However, Agnico Eagle could assess the road restoration as a potential support for the community.</li> </ul>
<b>AIR QUALITY AND DUST</b>											
N/A	<ul style="list-style-type: none"> <li>N/A</li> </ul>										<ul style="list-style-type: none"> <li>N/A</li> </ul>
<b>CLOSURE PLAN AND LAND REHABILITATION</b>											
Closure plan	<ul style="list-style-type: none"> <li>The way the closure plan will be updated and guaranteed</li> </ul>	✓							✓	✓	<ul style="list-style-type: none"> <li>Information has been shared for Advanced Exploration with stakeholders.</li> <li>Closure plan submission for the Production Phase is planned for 2023.</li> <li>Financial guarantee is mandatory.</li> <li>Agnico Eagle will continue to share information about the closure plan.</li> <li>Agnico Eagle is committed to keeping communities informed and showing transparency.</li> </ul>



**APPENDIX A: COMMUNITY INPUT AND OUTCOMES – STAKEHOLDERS**

TOPICS	KEY ISSUES	NATURE OF INTERVENTION			MINING PHASE						RESULTS OF ENGAGEMENT
		QUESTION	SUGGESTION	CONCERN	EXPLORATION / ASSESSMENT	ADVANCED EXPLORATION	CONSTRUCTION	OPERATION	DECOMMISSIONING	ABANDONMENT	
<b>CITIZENS AROUND PROJECT (PUBLIC INFORMATION SESSION)</b>											
<b>LAND SHARING AND USE</b>											
Lake access	<ul style="list-style-type: none"> <li>▶ When is Agnico Eagle planning on moving the Beaverhouse lake boat launch</li> </ul>	✓			✓		✓	✓			<ul style="list-style-type: none"> <li>▶ The boat launch does not need to be moved until the Construction Phase for the mine.</li> <li>▶ Agnico Eagle could potentially relocate the boat launch along the south shore of the lake.</li> <li>▶ However, Agnico Eagle will hold a workshop to gather suggestions with local users.</li> <li>▶ Agnico Eagle will assess the suggestions to confirm their feasibility and chose the practical option that would meet the needs of most users.</li> </ul>
Tailing storage	<ul style="list-style-type: none"> <li>▶ Potential location of tailings ponds</li> </ul>	✓					✓	✓			<ul style="list-style-type: none"> <li>▶ Tailing storage will be on-site.</li> <li>▶ Agnico Eagle is looking to have dry stacks (dry tailings) rather than ponds.</li> </ul>
	<ul style="list-style-type: none"> <li>▶ Potential acid rock drainage</li> </ul>	✓					✓	✓			<ul style="list-style-type: none"> <li>▶ Current information showed low risk, but further assessment will be conducted during ongoing environmental and engineering studies.</li> </ul>





**APPENDIX A: COMMUNITY INPUT AND OUTCOMES – STAKEHOLDERS**

TOPICS	KEY ISSUES	NATURE OF INTERVENTION			MINING PHASE						RESULTS OF ENGAGEMENT
		QUESTION	SUGGESTION	CONCERN	EXPLORATION / ASSESSMENT	ADVANCED EXPLORATION	CONSTRUCTION	OPERATION	DECOMMISSIONING	ABANDONMENT	
Project's footprint	▶ Planned location to process the ore	✓					✓	✓			▶ The ore will be processed on-site, as Agnico Eagle intends to build a processing plant (mill).
Energy sources	▶ Amount of power and energy required to operate the project and sources	✓					✓	✓			<ul style="list-style-type: none"> <li>▶ At full production, consumption will be around 30-35 megawatts (MW) per year.</li> <li>▶ Discussions have begun with local suppliers and producers to make sure Agnico Eagle will have enough power.</li> <li>▶ Full production will take time though, which means Agnico Eagle will only need around 5-10 MW per year for the mine development.</li> <li>▶ Agnico Eagle intends to draw power from the regional electric grid.</li> </ul>
<b>WILDLIFE</b>											
N/A	▶ N/A										▶ N/A
<b>FISH AND FISH HABITAT</b>											
Offsetting plan	▶ On-site intentions regarding offsetting	✓			✓		✓	✓	✓	✓	▶ The offsetting plan is not ready yet, but Agnico Eagle will look for local opportunities, pending regulatory requirements.



**APPENDIX A: COMMUNITY INPUT AND OUTCOMES – STAKEHOLDERS**

TOPICS	KEY ISSUES	NATURE OF INTERVENTION			MINING PHASE						RESULTS OF ENGAGEMENT
		QUESTION	SUGGESTION	CONCERN	EXPLORATION / ASSESSMENT	ADVANCED EXPLORATION	CONSTRUCTION	OPERATION	DECOMMISSIONING	ABANDONMENT	
<b>COMMUNITY ENGAGEMENT</b>											
Indigenous Nations	<ul style="list-style-type: none"> <li>Engagement activities conducted with Indigenous Nations</li> </ul>	✓			✓	✓	✓	✓	✓	✓	<ul style="list-style-type: none"> <li>Agnico Eagle currently engages with five Indigenous Nations, initially identified by the provincial government.</li> </ul>
Indigenous Knowledge Study	<ul style="list-style-type: none"> <li>Process to include Indigenous and traditional knowledge studies into the project design</li> </ul>	✓			✓						<ul style="list-style-type: none"> <li>Agnico Eagle already engaged with Indigenous Nations on this topic and will continue to do so.</li> <li>The proposed approach is intended to be collaborative to promote meaningful, respectful, and accurate inclusion of Indigenous knowledge in the Impact Statement.</li> </ul>
Information sharing	<ul style="list-style-type: none"> <li>Subscription to the Upper Beaver project communication list</li> </ul>	✓			✓	✓	✓	✓	✓	✓	<ul style="list-style-type: none"> <li>Agnico Eagle invited community members to subscribe to the Upper Beaver Gold project distribution list through the project’s website.</li> <li>This list allows stakeholders to be notified of the latest news and events regarding the project, such as upcoming consultation opportunities.</li> </ul>



**APPENDIX A: COMMUNITY INPUT AND OUTCOMES – STAKEHOLDERS**

TOPICS	KEY ISSUES	NATURE OF INTERVENTION			MINING PHASE						RESULTS OF ENGAGEMENT	
		QUESTION	SUGGESTION	CONCERN	EXPLORATION / ASSESSMENT	ADVANCED EXPLORATION	CONSTRUCTION	OPERATION	DECOMMISSIONING	ABANDONMENT		
												<ul style="list-style-type: none"> <li>▶ The presentation and the Meeting Report of the meeting have been published on the project’s website.</li> </ul>
<b>WATER MANAGEMENT</b>												
Water levels	<ul style="list-style-type: none"> <li>▶ Possible impacts of the project in general on groundwater</li> </ul>	✓			✓		✓	✓				<ul style="list-style-type: none"> <li>▶ Current information shows there will not be significant impact on groundwater levels.</li> <li>▶ Further assessment will be conducted.</li> <li>▶ Measures will be taken to ensure the dewatering plan meets regulatory approval.</li> <li>▶ According to current hydrology information, the project should not affect local water levels.</li> </ul>
	<ul style="list-style-type: none"> <li>▶ Possible impacts of the Misema River water flow with the diversion</li> </ul>	✓			✓		✓	✓	✓			



**APPENDIX A: COMMUNITY INPUT AND OUTCOMES – STAKEHOLDERS**

TOPICS	KEY ISSUES	NATURE OF INTERVENTION			MINING PHASE						RESULTS OF ENGAGEMENT
		QUESTION	SUGGESTION	CONCERN	EXPLORATION / ASSESSMENT	ADVANCED EXPLORATION	CONSTRUCTION	OPERATION	DECOMMISSIONING	ABANDONMENT	
<b>SOCIOECONOMIC IMPACTS</b>											
Employment	<ul style="list-style-type: none"> <li>▶ Possibility of current Agnico Eagle’s employees to be transferred to the Upper Beaver Gold project</li> </ul>	✓					✓	✓			<ul style="list-style-type: none"> <li>▶ This is part of Agnico Eagle’s employee policies and practices, and will likely to be possible, especially for people living in the area.</li> </ul>
Socioeconomic impacts	<ul style="list-style-type: none"> <li>▶ Examples of possible benefits for local First Nations, besides jobs</li> </ul>	✓					✓	✓			<ul style="list-style-type: none"> <li>▶ The Upper Beaver Gold project will generate new business opportunities for local suppliers and Indigenous partners.</li> <li>▶ Agnico Eagle would like to participate in projects that benefit the communities.</li> <li>▶ Environmental monitoring activities are being conducted in collaboration with Indigenous partners.</li> <li>▶ Cultural awareness and training opportunities are also good examples of benefits.</li> </ul>
<b>NOISE AND VIBRATION</b>											
N/A	<ul style="list-style-type: none"> <li>▶ N/A</li> </ul>										<ul style="list-style-type: none"> <li>▶ N/A</li> </ul>



**APPENDIX A: COMMUNITY INPUT AND OUTCOMES – STAKEHOLDERS**

TOPICS	KEY ISSUES	NATURE OF INTERVENTION			MINING PHASE						RESULTS OF ENGAGEMENT
		QUESTION	SUGGESTION	CONCERN	EXPLORATION / ASSESSMENT	ADVANCED EXPLORATION	CONSTRUCTION	OPERATION	DECOMMISSIONING	ABANDONMENT	
ROAD SHARING AND TRAFFIC											
N/A	▶ N/A										▶ N/A
AIR QUALITY AND DUST											
N/A	▶ N/A										▶ N/A
CLOSURE PLAN AND LAND REHABILITATION											
N/A	▶ N/A										▶ N/A





## **APPENDIX B**

### **COMMUNITY INPUT AND OUTCOMES – INDIGENOUS NATIONS**



**APPENDIX B: COMMUNITY INPUT AND OUTCOMES – INDIGENOUS NATIONS**

The information below presents the collected input as well as the outcomes of the engagement activities conducted by Agnico Eagle between September 2020 and September 2021. Responses provided and key issues have been distinguished by project phase, based on the information available to date. Distinction for potential impact per project components will be made within the Impact Statement study and engagement activities.

TOPICS	KEY ISSUES	NATURE OF INTERVENTION			MINING PHASE						RESULTS OF ENGAGEMENT
		QUESTION	SUGGESTION	CONCERN	EXPLORATION / ASSESSMENT	ADVANCED EXPLORATION	CONSTRUCTION	OPERATION	DECOMMISSIONING	ABANDONMENT	
<b>BEAVERHOUSE FIRST NATION</b>											
<b>LAND SHARING AND USE</b>											
Access to boat launch	▶ Need to preserve access for boat launching on the west side of Beaverhouse Lake			✓		✓	✓	✓	✓	✓	▶ Agnico Eagle committed to maintaining access to Beaverhouse Lake.
Traditional trail	▶ Discuss traditional trails in the project area		✓			✓	✓				▶ Agnico Eagle will investigate this matter further and have discussion regarding its location.
Sites of interest	▶ Potential sensitive sites in the project footprint and in the project area			✓	✓	✓					<ul style="list-style-type: none"> <li>▶ Agnico Eagle has agreed to collaborate in the Indigenous Knowledge Study.</li> <li>▶ Information will be considered in the Impact Statement.</li> <li>▶ Agnico Eagle will be working in collaboration with Indigenous Nations in developing mitigation measures.</li> </ul>



**APPENDIX B: COMMUNITY INPUT AND OUTCOMES – INDIGENOUS NATIONS**

TOPICS	KEY ISSUES	NATURE OF INTERVENTION			MINING PHASE						RESULTS OF ENGAGEMENT
		QUESTION	SUGGESTION	CONCERN	EXPLORATION / ASSESSMENT	ADVANCED EXPLORATION	CONSTRUCTION	OPERATION	DECOMMISSIONING	ABANDONMENT	
Sites of interest (cont'd)	<ul style="list-style-type: none"> <li>Concerns of cultural, heritage and traditional sites near York Lake, Ava Lake, and existing mine</li> </ul>			✓		✓	✓	✓	✓	✓	<ul style="list-style-type: none"> <li>Agnico Eagle will be working in collaboration with Indigenous Nations to develop mitigation measures.</li> </ul>
Cottages	<ul style="list-style-type: none"> <li>BHFN has not received information regarding the acquisition of cottages in the area</li> </ul>			✓		✓	✓	✓			<ul style="list-style-type: none"> <li>Agnico Eagle will share further information with BHFN.</li> </ul>
Beaverhouse Lake access	<ul style="list-style-type: none"> <li>Establish a new exit that would shorten the time to access the frozen part of Beaverhouse Lake</li> </ul>		✓				✓	✓			<ul style="list-style-type: none"> <li>Agnico Eagle will investigate this matter further.</li> </ul>
	<ul style="list-style-type: none"> <li>Maintain access to Beaverhouse Lake</li> </ul>			✓	✓	✓	✓	✓	✓	✓	<ul style="list-style-type: none"> <li>Some areas at the mine would need to be restricted for safety purposes, but access to Beaverhouse Lake will remain.</li> </ul>
Project's design	<ul style="list-style-type: none"> <li>The preferred project scenario involving the dewatering / diversion of York Lake</li> </ul>			✓	✓	✓					<ul style="list-style-type: none"> <li>Agnico Eagle has provided the community with further details on the preferred project scenario during a community meeting.</li> <li>Agnico Eagle is willing to provide further information if needed.</li> </ul>
	<ul style="list-style-type: none"> <li>Request for further information to better understand the rationale for the preferred project scenario</li> </ul>		✓		✓	✓					



**APPENDIX B: COMMUNITY INPUT AND OUTCOMES – INDIGENOUS NATIONS**

TOPICS	KEY ISSUES	NATURE OF INTERVENTION			MINING PHASE						RESULTS OF ENGAGEMENT
		QUESTION	SUGGESTION	CONCERN	EXPLORATION / ASSESSMENT	ADVANCED EXPLORATION	CONSTRUCTION	OPERATION	DECOMMISSIONING	ABANDONMENT	
WILDLIFE											
Moose	▶ Interest in reviewing the aerial moose survey report		✓		✓						▶ Agnico Eagle will share results of the moose survey with Indigenous Nations.
Hunting	▶ Request to maintain access to the area for hunting			✓		✓	✓	✓	✓	✓	<ul style="list-style-type: none"> <li>▶ Agnico Eagle will be working in collaboration with Indigenous Nations to develop mitigation measures.</li> <li>▶ Agnico Eagle will be working with Indigenous Nations to discuss any imposed hunting limitations or restrictions on BHFN traditional land.</li> </ul>



**APPENDIX B: COMMUNITY INPUT AND OUTCOMES – INDIGENOUS NATIONS**

TOPICS	KEY ISSUES	NATURE OF INTERVENTION			MINING PHASE						RESULTS OF ENGAGEMENT
		QUESTION	SUGGESTION	CONCERN	EXPLORATION / ASSESSMENT	ADVANCED EXPLORATION	CONSTRUCTION	OPERATION	DECOMMISSIONING	ABANDONMENT	
<b>FISH AND FISH HABITAT</b>											
Fish habitat	<ul style="list-style-type: none"> <li>Potential impacts on spawning beds, close to the boat launch of the Beaverhouse Lake</li> </ul>			✓		✓					<ul style="list-style-type: none"> <li>There is no plan for development in this area. No other impacts are expected.</li> </ul>
	<ul style="list-style-type: none"> <li>Consider information from community members on the impacts to fish habitat</li> </ul>		✓			✓					<ul style="list-style-type: none"> <li>Agnico Eagle would like to collaborate with local Indigenous Nations to collect information in support of the Impact Statement process.</li> <li>Agnico Eagle agrees on the importance of fish habitat.</li> </ul>
	<ul style="list-style-type: none"> <li>Potential impacts to traditional fishing practices in the area</li> </ul>			✓			✓	✓	✓	✓	<ul style="list-style-type: none"> <li>Agnico Eagle will work with BHFN to ensure traditional fishing practices are protected within its control, and to develop mitigation measures.</li> </ul>
Fish Health	<ul style="list-style-type: none"> <li>Current presence of parasite on some fish and fish health condition</li> </ul>	✓			✓						<ul style="list-style-type: none"> <li>Agnico Eagle’s consultant answered the question by explaining that it is common to observe parasites, such as black spots, especially on perch.</li> <li>A metal analysis will also be conducted with the fish contaminant sampling program.</li> </ul>





**APPENDIX B: COMMUNITY INPUT AND OUTCOMES – INDIGENOUS NATIONS**

TOPICS	KEY ISSUES	NATURE OF INTERVENTION			MINING PHASE						RESULTS OF ENGAGEMENT
		QUESTION	SUGGESTION	CONCERN	EXPLORATION / ASSESSMENT	ADVANCED EXPLORATION	CONSTRUCTION	OPERATION	DECOMMISSIONING	ABANDONMENT	
<b>COMMUNITY ENGAGEMENT</b>											
Engagement activities with community members	<ul style="list-style-type: none"> <li>▶ How Agnico Eagle will reach out to community members considering the pandemic situation</li> </ul>	✓			✓						<ul style="list-style-type: none"> <li>▶ Agnico Eagle will keep open lines of communication with local Indigenous Nations to identify community specific ways to reach out to their community members considering the pandemic situation.</li> <li>▶ Engagement activity was held with BHFN community members and was prepared with BHFN representatives' collaboration with consideration of the pandemic situation.</li> </ul>
Baseline studies and Impact Statement process	<ul style="list-style-type: none"> <li>▶ Interest in better understanding the sequence of activities and opportunities for the community to benefit from actively participating in the process</li> </ul>		✓		✓	✓					<ul style="list-style-type: none"> <li>▶ Agnico Eagle will keep supporting the community to further their understanding of the Impact Assessment Process.</li> <li>▶ Agnico Eagle will continue to make efforts to adjust to the capacity of Indigenous Nations to the extent reasonable.</li> <li>▶ Agnico Eagle shared a summary Booklet on the baseline work to make it easier to understand.</li> </ul>



**APPENDIX B: COMMUNITY INPUT AND OUTCOMES – INDIGENOUS NATIONS**

TOPICS	KEY ISSUES	NATURE OF INTERVENTION			MINING PHASE						RESULTS OF ENGAGEMENT
		QUESTION	SUGGESTION	CONCERN	EXPLORATION / ASSESSMENT	ADVANCED EXPLORATION	CONSTRUCTION	OPERATION	DECOMMISSIONING	ABANDONMENT	
<b>WATER MANAGEMENT</b>											
Water quality	▶ Potential impacts on water quality and current information from water quality monitoring			✓		✓	✓	✓			▶ Agnico Eagle held a meeting with BHFN's community members regarding water management, water quality and monitoring practices.
	▶ Potential impact on two nameless lakes located upstream of the project			✓		✓	✓	✓	✓		▶ Need to confirm the exact location of the referred lake. Looks that these lakes are located two or three kilometres upstream of the project and should then not be impacted.
	▶ Analyze the water quality of these two nameless lakes		✓			✓	✓	✓	✓		▶ Agnico Eagle offers to take samples of the water to analyze the water quality of the two nameless lakes upstream of the project once their location is confirmed.
Changes to waterbodies	▶ Dewatering of York Lake and diversion of Misema River			✓			✓	✓			▶ Agnico Eagle will work with BHFN to ensure traditional fishing practices are protected within its control, and to develop mitigation measures.



**APPENDIX B: COMMUNITY INPUT AND OUTCOMES – INDIGENOUS NATIONS**

TOPICS	KEY ISSUES	NATURE OF INTERVENTION			MINING PHASE						RESULTS OF ENGAGEMENT
		QUESTION	SUGGESTION	CONCERN	EXPLORATION / ASSESSMENT	ADVANCED EXPLORATION	CONSTRUCTION	OPERATION	DECOMMISSIONING	ABANDONMENT	
<b>SOCIOECONOMIC IMPACT</b>											
Racism	<ul style="list-style-type: none"> <li>Cultural awareness training is required for all employees and should be provided annually</li> </ul>		✓			✓	✓	✓			<ul style="list-style-type: none"> <li>▶ Agnico Eagle is committed to developing cultural awareness training with Indigenous Nations.</li> <li>▶ Agnico Eagle will provide the cultural awareness training to all new employees in a reasonable delay and refresh learned knowledge on a regular basis.</li> </ul>
<b>NOISE AND VIBRATION</b>											
N/A	N/A										N/A
<b>AIR QUALITY AND DUST</b>											
N/A	N/A										N/A
<b>CLOSURE PLAN AND LAND REHABILITATION</b>											
Rehabilitation	<ul style="list-style-type: none"> <li>The progressive rehabilitation process</li> </ul>	✓						✓	✓	✓	<ul style="list-style-type: none"> <li>▶ Agnico Eagle will involve local Indigenous Nations at different stages of the closure planning process.</li> </ul>



**APPENDIX B: COMMUNITY INPUT AND OUTCOMES – INDIGENOUS NATIONS**

TOPICS	KEY ISSUES	NATURE OF INTERVENTION			MINING PHASE						RESULTS OF ENGAGEMENT
		QUESTION	SUGGESTION	CONCERN	EXPLORATION / ASSESSMENT	ADVANCED EXPLORATION	CONSTRUCTION	OPERATION	DECOMMISSIONING	ABANDONMENT	
Rehabilitation (cont'd)	▶ Cleaning the old remains of the former mine (1912-1971)	✓							✓	✓	▶ Agnico Eagle is responsible of the reclamation work associate to historic mining legacies on the Upper Beaver Property.
	▶ Presence of contaminants in tailings used for the paste backfill	✓							✓	✓	▶ Agnico Eagle explained that tailing in solid form have less impact on groundwater than slurry tailings. ▶ More tests will be done on paste backfill material to confirm there will be no impact. ▶ Recent tests done on another site showed that the paste backfill reduce the risk of acid generation when the tailing have that potential.
ROAD SHARING AND TRAFFIC											
N/A	N/A										N/A



**APPENDIX B: COMMUNITY INPUT AND OUTCOMES – INDIGENOUS NATIONS**

TOPICS	KEY ISSUES	NATURE OF INTERVENTION			MINING PHASE						RESULTS OF ENGAGEMENT
		QUESTION	SUGGESTION	CONCERN	EXPLORATION / ASSESSMENT	ADVANCED EXPLORATION	CONSTRUCTION	OPERATION	DECOMMISSIONING	ABANDONMENT	
<b>MATACHEWAN FIRST NATION</b>											
LAND SHARING AND USE											
Footprint	▶ The size of a “small” open pit	✓					✓	✓			<ul style="list-style-type: none"> <li>▶ Required information has been shared with the community.</li> <li>▶ The expected size should be around 300 metres, which is similar to the size of the McBean Pit located in Dobie.</li> <li>▶ Size of the pit is limited to this area due to stability issues and to constrain the project footprint.</li> </ul>
Potential aggregate pit on Crown land	▶ The possibility of using a second aggregate pit, considering there is already adequate material at two existing locations close to the project			✓	✓	✓	✓				<ul style="list-style-type: none"> <li>▶ Agnico Eagle will take into account these concerns during the assessment of alternatives.</li> <li>▶ Agnico Eagle will share justification if a new aggregate pit is selected as the preferred alternative.</li> <li>▶ Agnico Eagle confirmed that access to Crown land would remain during the test pit activities.</li> </ul>





**APPENDIX B: COMMUNITY INPUT AND OUTCOMES – INDIGENOUS NATIONS**

TOPICS	KEY ISSUES	NATURE OF INTERVENTION			MINING PHASE						RESULTS OF ENGAGEMENT	
		QUESTION	SUGGESTION	CONCERN	EXPLORATION / ASSESSMENT	ADVANCED EXPLORATION	CONSTRUCTION	OPERATION	DECOMMISSIONING	ABANDONMENT		
Cottages	▶ Which cottages have been acquired by Agnico Eagle so that the community can evaluate the potential impacts from their perspective	✓			✓	✓						▶ Agnico Eagle shared information with the community.
<b>WILDLIFE</b>												
Moose	▶ Interest in reviewing the aerial moose survey report		✓		✓							▶ Agnico Eagle will share results of the moose survey with Indigenous Nations.
<b>FISH AND FISH HABITAT</b>												
N/A	N/A											N/A
<b>COMMUNITY ENGAGEMENT</b>												
Engagement activities with community members	▶ How Agnico Eagle will reach out to community members considering the pandemic situation	✓			✓							▶ Agnico Eagle will get in touch with local Indigenous Nations to identify community specific ways to reach out to their community members considering the pandemic situation.



**APPENDIX B: COMMUNITY INPUT AND OUTCOMES – INDIGENOUS NATIONS**

TOPICS	KEY ISSUES	NATURE OF INTERVENTION			MINING PHASE						RESULTS OF ENGAGEMENT	
		QUESTION	SUGGESTION	CONCERN	EXPLORATION / ASSESSMENT	ADVANCED EXPLORATION	CONSTRUCTION	OPERATION	DECOMMISSIONING	ABANDONMENT		
Baseline studies and Impact Statement process	▶ Interest in participating in the country foods baseline study		✓		✓							<ul style="list-style-type: none"> <li>▶ Agnico Eagle is glad the suggested collaborative approach is well received.</li> <li>▶ Agnico Eagle encouraged Indigenous Nations to identify their interest in participating in the baseline studies as soon as possible.</li> <li>▶ Agnico Eagle aims to make participation inclusive; however, the COVID-19 pandemic may result in some limitations.</li> </ul>
	▶ Agnico Eagle having to work with five Indigenous Nations and the challenges it could bring for collaborative activities such as the baseline studies			✓	✓							
<b>WATER MANAGEMENT</b>												
Surface water monitoring	▶ How 2020 and 2021 water quality results compare	✓			✓							<ul style="list-style-type: none"> <li>▶ Agnico Eagle will prepare and provide a summary with year-over-year comparison.</li> <li>▶ Agnico Eagle identified that since acquiring the property, local water quality has been assessed and there has been no indication of chemical leaching into neighbouring waterbodies.</li> </ul>





**APPENDIX B: COMMUNITY INPUT AND OUTCOMES – INDIGENOUS NATIONS**

TOPICS	KEY ISSUES	NATURE OF INTERVENTION			MINING PHASE						RESULTS OF ENGAGEMENT
		QUESTION	SUGGESTION	CONCERN	EXPLORATION / ASSESSMENT	ADVANCED EXPLORATION	CONSTRUCTION	OPERATION	DECOMMISSIONING	ABANDONMENT	
<b>SOCIOECONOMIC IMPACT</b>											
Business opportunities	▶ Interest in business opportunities related to drilling and test pits		✓		✓	✓					▶ Agnico Eagle will keep sharing the information regarding the upcoming contract opportunities.
<b>NOISE AND VIBRATION</b>											
N/A	N/A										N/A
<b>AIR QUALITY AND DUST</b>											
N/A	N/A										N/A
<b>CLOSURE PLAN AND LAND REHABILITATION</b>											
N/A	N/A										N/A
<b>ROAD SHARING AND TRAFFIC</b>											
N/A	N/A										N/A



**APPENDIX B: COMMUNITY INPUT AND OUTCOMES – INDIGENOUS NATIONS**

TOPICS	KEY ISSUES	NATURE OF INTERVENTION			MINING PHASE						RESULTS OF ENGAGEMENT
		QUESTION	SUGGESTION	CONCERN	EXPLORATION / ASSESSMENT	ADVANCED EXPLORATION	CONSTRUCTION	OPERATION	DECOMMISSIONING	ABANDONMENT	
<b>MÉTIS NATION OF ONTARIO</b>											
LAND SHARING AND USE											
Footprint	▶ Footprint during the Production Phase	✓						✓			▶ Agnico Eagle shared information with the participant. ▶ Agnico Eagle aims to minimize its footprint as much as possible.
Exploration for Potential aggregate pit on Crown land	▶ Accessibility to Crown land during the planned test pits			✓	✓						▶ Agnico Eagle confirmed that the access to Crown land was not to be disturbed during test pit activities.
WILDLIFE											
N/A	N/A										N/A
FISH AND FISH HABITAT											
N/A	N/A										N/A
COMMUNITY ENGAGEMENT											
Baseline studies and Impact Statement process	▶ Funding for consultation activities since federal funding can only be granted after the IPD is ruled admissible by the Agency			✓	✓						▶ Agnico Eagle understands the funding capacity challenges and is interested in working with each Indigenous Nation to determine a mutually agreeable solution to support meaningful engagement.



**APPENDIX B: COMMUNITY INPUT AND OUTCOMES – INDIGENOUS NATIONS**

TOPICS	KEY ISSUES	NATURE OF INTERVENTION			MINING PHASE						RESULTS OF ENGAGEMENT	
		QUESTION	SUGGESTION	CONCERN	EXPLORATION / ASSESSMENT	ADVANCED EXPLORATION	CONSTRUCTION	OPERATION	DECOMMISSIONING	ABANDONMENT		
Baseline studies and Impact Statement process (cont'd)	<ul style="list-style-type: none"> <li>Interest in developing a Consultation Agreement / Protocols</li> </ul>		✓		✓							<ul style="list-style-type: none"> <li>Agnico Eagle is open to this approach and willing to have discussions to determine a mutually agreeable path forward that supports meaningful engagement and participation.</li> </ul>
<b>WATER MANAGEMENT</b>												
Surface water monitoring	<ul style="list-style-type: none"> <li>Potential arsenic contamination of waterbodies due to bulk sampling and rock storage</li> </ul>			✓		✓						<ul style="list-style-type: none"> <li>Low risk of arsenic occurrence is expected in waterbodies based on water and rock analysis.</li> </ul>
	<ul style="list-style-type: none"> <li>Agnico Eagle's responsibility in case of impacts caused by previous mining activities such as chemical leaching into neighbouring waterbodies</li> </ul>	✓				✓						<ul style="list-style-type: none"> <li>Agnico Eagle confirmed its responsibility for any potential impacts from previous mining activities.</li> </ul>
<b>SOCIOECONOMIC IMPACT</b>												
N/A	N/A											N/A
<b>NOISE AND VIBRATION</b>												
N/A	N/A											N/A
<b>AIR QUALITY AND DUST</b>												
N/A	N/A											N/A
<b>CLOSURE PLAN AND LAND REHABILITATION</b>												
N/A	N/A											N/A
<b>ROAD SHARING AND TRAFFIC</b>												
N/A	N/A											N/A



**APPENDIX B: COMMUNITY INPUT AND OUTCOMES – INDIGENOUS NATIONS**

TOPICS	KEY ISSUES	NATURE OF INTERVENTION			MINING PHASE						RESULTS OF ENGAGEMENT
		QUESTION	SUGGESTION	CONCERN	EXPLORATION / ASSESSMENT	ADVANCED EXPLORATION	CONSTRUCTION	OPERATION	DECOMMISSIONING	ABANDONMENT	
<b>TIMISKAMING FIRST NATION</b>											
<b>LAND SHARING AND USE</b>											
Cumulative impacts	▶ How will cumulative impacts be addressed in the Impact Assessment, considering that several sites have mining potential in the area			✓	✓	✓					▶ Agnico Eagle plans to assess cumulative effects in the Impact Statement.
Project's footprint	▶ The necessity to build a new mill	✓					✓	✓			▶ Agnico Eagle has assessed several options for processing the ore. However: <ul style="list-style-type: none"> <li>◆ Existing mills do not have the capacity to handle the proposed production rates.</li> <li>◆ Existing mills are located too far away.</li> <li>◆ Existing mills may not be capable of processing the ore from the Upper Beaver Gold project, as deposits have unique characteristics and require specific processing methods.</li> </ul> ▶ Underground mining operations intend to reuse tailings as part of paste backfill management, which requires the materials to remain on-site.







**APPENDIX B: COMMUNITY INPUT AND OUTCOMES – INDIGENOUS NATIONS**

TOPICS	KEY ISSUES	NATURE OF INTERVENTION			MINING PHASE						RESULTS OF ENGAGEMENT
		QUESTION	SUGGESTION	CONCERN	EXPLORATION / ASSESSMENT	ADVANCED EXPLORATION	CONSTRUCTION	OPERATION	DECOMMISSIONING	ABANDONMENT	
<b>WILDLIFE</b>											
Moose	<ul style="list-style-type: none"> <li>▶ Interest in reviewing the aerial moose survey report</li> </ul>		✓		✓						<ul style="list-style-type: none"> <li>▶ Agnico Eagle will share results of the moose survey with Indigenous Nations.</li> </ul>
<b>FISH AND FISH HABITAT</b>											
Fish habitat	<ul style="list-style-type: none"> <li>▶ Potential effect on habitat regarding the draining of the lake</li> <li>▶ Impact on fish habitat and mitigation measure</li> </ul>	✓				✓					<ul style="list-style-type: none"> <li>▶ Agnico Eagle would like to collaborate with local Indigenous Nations to collect information in support of the Impact Statement process.</li> <li>▶ Agnico Eagle agrees on the importance of fish habitat.</li> </ul>
<b>COMMUNITY ENGAGEMENT</b>											
Baseline studies and Impact Statement process	<ul style="list-style-type: none"> <li>▶ Agnico Eagle having to work with five Indigenous Nations and the challenges it could bring for collaborative activities such as the baseline studies</li> </ul>			✓	✓						<ul style="list-style-type: none"> <li>▶ Agnico Eagle is glad the suggested collaborative approach is well received.</li> <li>▶ Agnico Eagle encouraged Indigenous Nations to identify their interest in participating in the baseline studies as soon as possible.</li> <li>▶ Agnico Eagle aims to make participation inclusive; however, the COVID-19 pandemic may place some limitations.</li> </ul>





**APPENDIX B: COMMUNITY INPUT AND OUTCOMES – INDIGENOUS NATIONS**

TOPICS	KEY ISSUES	NATURE OF INTERVENTION			MINING PHASE						RESULTS OF ENGAGEMENT
		QUESTION	SUGGESTION	CONCERN	EXPLORATION / ASSESSMENT	ADVANCED EXPLORATION	CONSTRUCTION	OPERATION	DECOMMISSIONING	ABANDONMENT	
Baseline studies and Impact Statement process (cont'd)	<ul style="list-style-type: none"> <li>Concern regarding funding for consultation activities since federal funding can only be granted after the IPD is ruled admissible by the Agency</li> </ul>			✓	✓						<ul style="list-style-type: none"> <li>Agnico Eagle understands the funding capacity challenge and is interested in working with each Indigenous Nation to determine a mutually agreeable solution to support meaningful engagement.</li> </ul>
	<ul style="list-style-type: none"> <li>Interest in developing Consultation Agreement / Protocols</li> </ul>		✓		✓						<ul style="list-style-type: none"> <li>Agnico Eagle is open to this approach and willing to have discussions to determine a mutually agreeable path forward that supports meaningful engagement and participation.</li> </ul>
Indigenous Knowledge (IK) study	<ul style="list-style-type: none"> <li>The Indigenous Knowledge study approach, whether it will respect Indigenous values and be conducted in an acceptable manner for community members</li> </ul>			✓	✓						<ul style="list-style-type: none"> <li>Agnico Eagle recognizes the importance and sensitive nature of Indigenous Knowledge studies. The proposed approach is intended to be collaborative to promote meaningful, respectful, and accurate inclusion of knowledge in the Impact Statement.</li> </ul>
	<ul style="list-style-type: none"> <li>Agnico Eagle's accountability towards external partners' approach and the accuracy of the data</li> </ul>			✓	✓						<ul style="list-style-type: none"> <li>Agnico Eagle supports the preference of Indigenous Nations to undertake these studies directly and/or through the support of their own consultants and will consider funding proposals.</li> <li>Agnico Eagle proposes to work with each Indigenous Nation regarding an</li> </ul>



**APPENDIX B: COMMUNITY INPUT AND OUTCOMES – INDIGENOUS NATIONS**

TOPICS	KEY ISSUES	NATURE OF INTERVENTION			MINING PHASE						RESULTS OF ENGAGEMENT
		QUESTION	SUGGESTION	CONCERN	EXPLORATION / ASSESSMENT	ADVANCED EXPLORATION	CONSTRUCTION	OPERATION	DECOMMISSIONING	ABANDONMENT	
Indigenous Knowledge (IK) study (cont'd)	▶ The kind of funding Indigenous Nations could receive, including funding before the beginning of the Impact Assessment	✓			✓						<p>approach to ethically and respectfully understand and use their shared information, including approaches to weaving together Indigenous Knowledge and Western science, validation, and data use.</p> <p>▶ Agnico Eagle has entrusted a consulting firm to support them in the collaboration approach but remains accountable.</p>
	▶ The importance of developing a framework for knowledge weaving within the Indigenous Knowledge study and the challenges it can represent			✓	✓						
<b>WATER MANAGEMENT</b>											
Changes to waterbodies	▶ The need to pump the lake to maintain its drained state			✓			✓	✓	✓		<p>▶ Diversion channels will be established to divert the water from Ava Lake to the Misema River.</p> <p>▶ The preliminary strategy is to install properly designed dykes to make sure that the York Lake area remains dry for mining to safely occur.</p> <p>▶ Agnico Eagle would like to reflood the pit after closure of the mine to create a bigger lake.</p>
	▶ The need to receive more details on the diversion of the Misema River			✓	✓						





**APPENDIX B: COMMUNITY INPUT AND OUTCOMES – INDIGENOUS NATIONS**

TOPICS	KEY ISSUES	NATURE OF INTERVENTION			MINING PHASE						RESULTS OF ENGAGEMENT
		QUESTION	SUGGESTION	CONCERN	EXPLORATION / ASSESSMENT	ADVANCED EXPLORATION	CONSTRUCTION	OPERATION	DECOMMISSIONING	ABANDONMENT	
<b>SOCIOECONOMIC IMPACT</b>											
Training opportunities	<ul style="list-style-type: none"> <li>Whether the community members getting training would be ready when the job opportunities come up</li> </ul>			✓				✓			<ul style="list-style-type: none"> <li>Agnico Eagle is confident communities will have enough time.</li> <li>As a first step, communities have been requested to identify community needs and priorities.</li> </ul>
Racism	<ul style="list-style-type: none"> <li>Social impacts, such as difficulties faced when applying for jobs in mines and experiencing racism from other employees</li> </ul>			✓				✓			<ul style="list-style-type: none"> <li>Agnico Eagle confirmed this aspect could be a key point in the socioeconomic and health (well-being) studies, and that the project is required to complete a Gender-Based Analysis Plus (GBA+) as part of the Impact Statement.</li> <li>Agnico Eagle has an <a href="#">Indigenous Peoples Engagement Policy</a> as well as a <a href="#">Diversity and Inclusion Policy</a>.</li> <li>Agnico Eagle has provided cultural awareness training to some employees and actively seeks opportunities for continual improvement.</li> </ul>
	<ul style="list-style-type: none"> <li>Racism aspect should be considered in the social baseline study</li> </ul>		✓		✓					✓	
	<ul style="list-style-type: none"> <li>Having Upper Beaver's employees trained on cultural and gender awareness</li> </ul>		✓					✓			
<b>NOISE AND VIBRATION</b>											
N/A	N/A										N/A



**APPENDIX B: COMMUNITY INPUT AND OUTCOMES – INDIGENOUS NATIONS**

TOPICS	KEY ISSUES	NATURE OF INTERVENTION			MINING PHASE						RESULTS OF ENGAGEMENT	
		QUESTION	SUGGESTION	CONCERN	EXPLORATION / ASSESSMENT	ADVANCED EXPLORATION	CONSTRUCTION	OPERATION	DECOMMISSIONING	ABANDONMENT		
<b>AIR QUALITY AND DUST</b>												
Parameters to be assessed	<ul style="list-style-type: none"> <li>▶ Interest about air quality parameters and the assessment of the impact on wildlife</li> </ul>	✓			✓							<ul style="list-style-type: none"> <li>▶ Agnico Eagle, as part of the engagement plan, will consider comments received from Indigenous Nations.</li> <li>▶ Agnico Eagle will aim to understand the comments received, consider how the feedback can be considered in the project planning and share back how the feedback was considered as well as what changes were made to the project in response to the feedback, where applicable. Where feedback cannot be included, reasoning will be provided.</li> </ul>
	<ul style="list-style-type: none"> <li>▶ The possibility to go beyond legal standards if the community shares concerns on certain impacts, such as air quality</li> </ul>	✓					✓	✓				
<b>CLOSURE PLAN AND LAND REHABILITATION</b>												
N/A	N/A											N/A
<b>ROAD SHARING AND TRAFFIC</b>												
N/A	N/A											N/A



**APPENDIX B: COMMUNITY INPUT AND OUTCOMES – INDIGENOUS NATIONS**

TOPICS	KEY ISSUES	NATURE OF INTERVENTION			MINING PHASE						RESULTS OF ENGAGEMENT
		QUESTION	SUGGESTION	CONCERN	EXPLORATION / ASSESSMENT	ADVANCED EXPLORATION	CONSTRUCTION	OPERATION	DECOMMISSIONING	ABANDONMENT	
<b>WAHGOSHIG FIRST NATION</b>											
LAND SHARING AND USE											
Project's design	<ul style="list-style-type: none"> <li>Request for further information to better understand the rationale for the preferred project scenario</li> </ul>		✓								<ul style="list-style-type: none"> <li>Agnico Eagle will provide the community with further details on the preferred project scenario.</li> </ul>
Sensitive sites mapping	<ul style="list-style-type: none"> <li>Specific details and locations of sensitive cultural sites would not be shared with Agnico Eagle but buffer zones (polygons) will be identified to support assessment.</li> </ul>			✓			✓	✓			<ul style="list-style-type: none"> <li>Agnico Eagle supports the protection of information regarding sensitive cultural sites and can use buffered areas to support the assessment.</li> </ul>
Indigenous Knowledge and Land Use	<ul style="list-style-type: none"> <li>Maintain and respect the confidentiality of Indigenous Knowledge and Land Use information (cultural sites) and work with WFN to prepare information pertaining to WFN</li> </ul>			✓		✓	✓	✓			<ul style="list-style-type: none"> <li>Agnico Eagle will work with Indigenous Nations to develop Indigenous Knowledge studies and will validate how information is interpreted and used in the Impact Statement.</li> </ul>







**APPENDIX B: COMMUNITY INPUT AND OUTCOMES – INDIGENOUS NATIONS**

TOPICS	KEY ISSUES	NATURE OF INTERVENTION			MINING PHASE						RESULTS OF ENGAGEMENT	
		QUESTION	SUGGESTION	CONCERN	EXPLORATION / ASSESSMENT	ADVANCED EXPLORATION	CONSTRUCTION	OPERATION	DECOMMISSIONING	ABANDONMENT		
<b>WILDLIFE</b>												
Participation in studies	▶ Interest in methodology and participation in wildlife studies related to moose		✓			✓						▶ Agnico Eagle is involving Indigenous Nations and encourage participation in field studies, where possible.
Wildlife	▶ Consideration of wildlife in the Upper Beaver Gold project's potential mitigation measure			✓	✓	✓	✓	✓				▶ Agnico Eagle will not permit hunting within the property boundaries and the speed limit on Beaverhouse Road will be set by considering wildlife and health safety (within its control). ▶ Wildlife collisions and near misses will be documented / reported. ▶ Wildlife will be fully considered during preparation of the Impact Statement, after which mitigation measures and protection and effects monitoring plan when required, will be discussed with Indigenous Nations. ▶ Agnico Eagle encourages participants to share any specific information regarding local wildlife to consider it within the baseline studies.
Wildlife (cont'd)												



**APPENDIX B: COMMUNITY INPUT AND OUTCOMES – INDIGENOUS NATIONS**

TOPICS	KEY ISSUES	NATURE OF INTERVENTION			MINING PHASE						RESULTS OF ENGAGEMENT	
		QUESTION	SUGGESTION	CONCERN	EXPLORATION / ASSESSMENT	ADVANCED EXPLORATION	CONSTRUCTION	OPERATION	DECOMMISSIONING	ABANDONMENT		
												<ul style="list-style-type: none"> <li>▶ Agnico Eagle is adhering to the principles of Towards Sustainable Mining which includes a Biodiversity Conservation Management protocol.</li> </ul>
Moose	<ul style="list-style-type: none"> <li>▶ Activities associated with the project are likely to impact local moose populations</li> </ul>			✓		✓	✓	✓				<ul style="list-style-type: none"> <li>▶ Agnico Eagle will not permit hunting within the property boundaries and the speed limit on Beaverhouse Road will be set by considering wildlife and health safety (within its control).</li> <li>▶ Wildlife collisions and near misses will be documented / reported.</li> <li>▶ Agnico Eagle will develop a Moose Protection and Effects Monitoring Plan during the Impact Statement for implementation during the construction and operation phases.</li> <li>▶ Agnico Eagle will similarly develop and implement a Biodiversity Conservation Management Protocol.</li> <li>▶ Agnico Eagle will record observations of moose during advanced exploration, construction and operation phases.</li> </ul>





**APPENDIX B: COMMUNITY INPUT AND OUTCOMES – INDIGENOUS NATIONS**

TOPICS	KEY ISSUES	NATURE OF INTERVENTION			MINING PHASE						RESULTS OF ENGAGEMENT
		QUESTION	SUGGESTION	CONCERN	EXPLORATION / ASSESSMENT	ADVANCED EXPLORATION	CONSTRUCTION	OPERATION	DECOMMISSIONING	ABANDONMENT	
<b>FISH AND FISH HABITAT</b>											
Participation in studies	<ul style="list-style-type: none"> <li>Interest in methodology and participation in wildlife studies related to fish</li> </ul>		✓			✓					<ul style="list-style-type: none"> <li>Agnico Eagle is involving Indigenous Nations and encourage participation in field studies, where possible.</li> </ul>
<b>COMMUNITY ENGAGEMENT</b>											
Engagement	<ul style="list-style-type: none"> <li>Collaboration in engagement planning including maintaining meeting notes, challenges related to communication by email and need for information in French</li> </ul>			✓		✓	✓	✓	✓		<ul style="list-style-type: none"> <li>Agnico Eagle will work in close collaboration with Indigenous Nations on engagement planning.</li> <li>Even if most information is in English, Agnico Eagle will evaluate the possibility to translate key documents in French.</li> </ul>
	<ul style="list-style-type: none"> <li>Need to be involved in the assessment of alternative means to the project</li> </ul>			✓		✓					<ul style="list-style-type: none"> <li>Agnico Eagle will engage with Indigenous Nations regarding the assessment of alternatives.</li> </ul>
Funding	<ul style="list-style-type: none"> <li>Discuss funding for technical support</li> </ul>	✓				✓					<ul style="list-style-type: none"> <li>Agnico Eagle will engage with Indigenous Nations regarding funding for technical support through the Impact Statement.</li> </ul>



**APPENDIX B: COMMUNITY INPUT AND OUTCOMES – INDIGENOUS NATIONS**

TOPICS	KEY ISSUES	NATURE OF INTERVENTION			MINING PHASE						RESULTS OF ENGAGEMENT
		QUESTION	SUGGESTION	CONCERN	EXPLORATION / ASSESSMENT	ADVANCED EXPLORATION	CONSTRUCTION	OPERATION	DECOMMISSIONING	ABANDONMENT	
<b>WATER MANAGEMENT</b>											
Mercury	<ul style="list-style-type: none"> <li>Changes in mercury concentration in the receiver due to project activities, as well as mine effluent and the way it is going to be monitored</li> </ul>			✓		✓	✓	✓			<ul style="list-style-type: none"> <li>Agnico Eagle identified that it is not expected that mercury will be released in concentrations that exceed the Provincial Water Quality Objectives (PWQO) for protection of aquatic life criteria. Effluent water quality samples will be collected on a weekly basis.</li> <li>Agnico Eagle will use an adequate detection limit.</li> <li>Agnico Eagle will validate if the modelling prediction is correct, and if not, additional mitigation measures may have to be implemented.</li> </ul>
<b>SOCIOECONOMIC IMPACT</b>											
N/A	N/A										N/A
<b>NOISE AND VIBRATION</b>											
N/A	N/A										N/A
<b>AIR QUALITY AND DUST</b>											
N/A	N/A										N/A



**APPENDIX B: COMMUNITY INPUT AND OUTCOMES – INDIGENOUS NATIONS**

TOPICS	KEY ISSUES	NATURE OF INTERVENTION			MINING PHASE						RESULTS OF ENGAGEMENT
		QUESTION	SUGGESTION	CONCERN	EXPLORATION / ASSESSMENT	ADVANCED EXPLORATION	CONSTRUCTION	OPERATION	DECOMMISSIONING	ABANDONMENT	
CLOSURE PLAN AND LAND REHABILITATION											
N/A	N/A										N/A
ROAD SHARING AND TRAFFIC											
N/A	N/A										N/A

